



12 Hillcrest Road ANGLESEA VIC

2 1 2

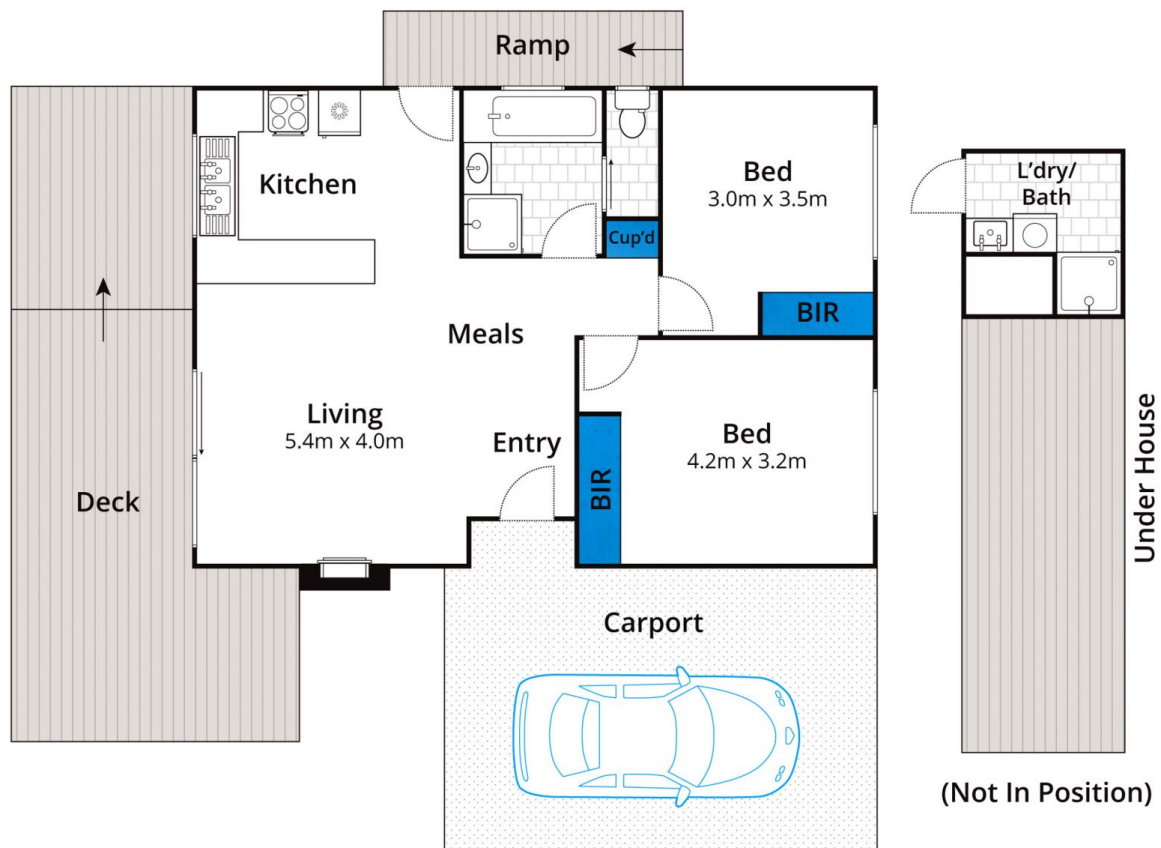
This solid and dependable beach house is cheerful and cosy, simple and serene. Cherished since new by three generations, it offers a comfortable escape to retreat to. Located in a quiet pocket of Anglesea, it features an elevated leafy outlook from the open plan living zone. Snuggle in and enjoy winters beside the log fire. Or throw open the doors in summer for outdoor entertaining on the private deck with peaceful nature filled views. All of the home's original decor features have been preserved including solid timber flooring and panelling, as well as stylish retro kitchen cabinetry. The two light filled and generous bedrooms have built in robes and there is an impressive amount of storage throughout the home. Outside the features continue with a shower room for easy clean up after a day at the beach and there is access to

Type : House
Land Size : 669.4 sqm
View : <https://www.greatoceanproperties.com.au/5700351>



Marty Maher
0352200000

[For full version visit the website](https://www.greatoceanproperties.com.au)



Approx House Area 65m²

Whilst bwrm.com.au has made every attempt to ensure the accuracy of the floor plan contained here, measurements are approximate and no responsibility is taken for any error, omission, or mis-statement. This plan is for illustrative purposes only.

12 Hillcrest Road, Anglesea

