



17 Pickworth Drive ANGLESEA VIC

3 2 2

This double storey home is a fantastic beach house with views of Anglesea including the golf course, national park and coastline to Point Addis. Available for the short term of 4 to 6 months from early October, unfurnished. Comprising 3 bedrooms, 2 bathrooms, multiple living areas and expansive decking. Enjoy spacious open plan living upstairs and the large family room or possibly fourth bedroom on the lower level, complete with plentiful storage and easy access to the large backyard. Set on 1071 sqm (approximately) there is ample off street parking. Enjoy summer in this elevated peaceful location.

Features include :

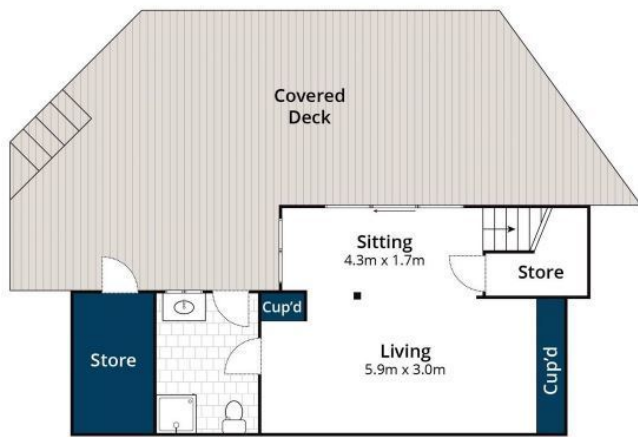
- ? 3 bedrooms upstairs, master with built in robe and window to the coastline views
- ? 2 bathrooms including bath tub, separate w.c

Type : House
Price : \$ 480
Land Size : 1071
View : <https://www.greatoceanproperties.com.au/5810215>



Michelle Mc Donald
03 5263 1100

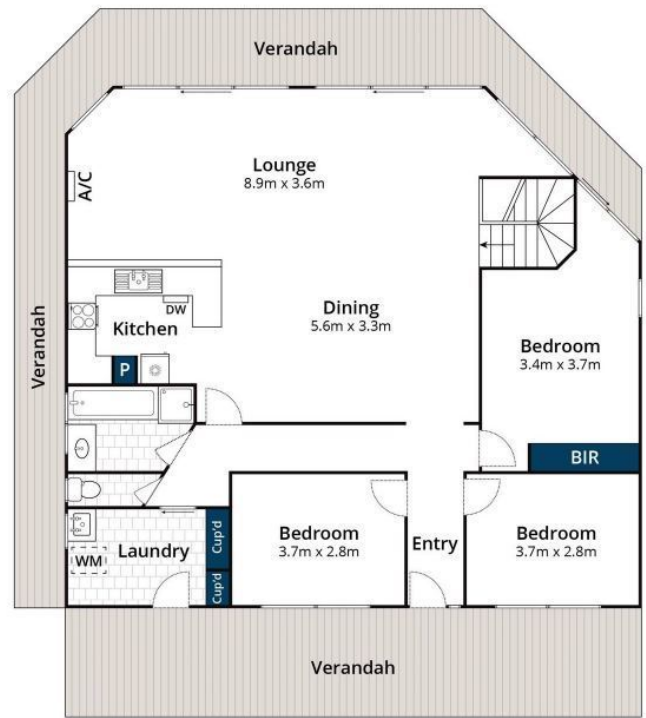
[For full version visit the website](https://www.greatoceanproperties.com.au)



Lower Ground Floor



(Not In Position)



Ground Floor

Approx House Area 177m²

Whilst bwrn.com.au has made every attempt to ensure the accuracy of the floor plan contained here, measurements are approximate and no responsibility is taken for any error, omission, or mis-statement. This plan is for illustrative purposes only.

