



4/143D Great Ocean Road ANGLESEA VIC

3 2 2

Moments to the ocean, contemporary, chic and coastal, this property is an exciting opportunity to fully embrace the Anglesea lifestyle. Offered over two levels and in a quiet complex, it is an inviting and stylish retreat.

The smart architectural influence is immediately obvious in the upstairs open plan living area where soaring ceilings add volume and strategically placed glazing bathes the space in natural light. There is easy flow to outdoor living on a north facing deck; this is the ideal spot to enjoy entertaining family and friends. The master suite, also on this level, is generous with a leafy outlook and includes plentiful storage and an en-suite.

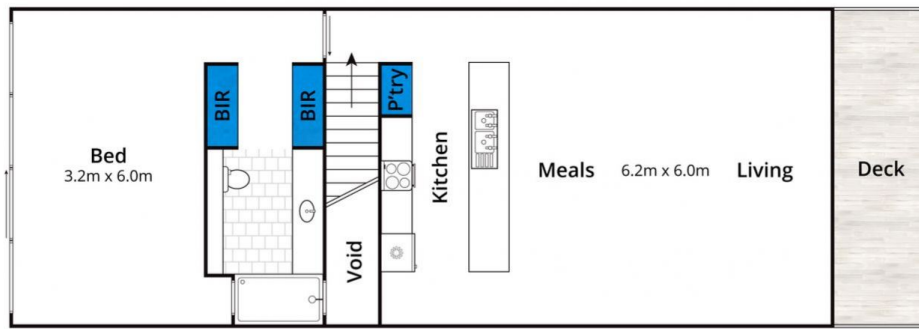
Downstairs there are two spacious bedrooms, both have built in robes and enjoy access to outdoor living and a

[For full version visit the website](https://www.greateoceanproperties.com.au/5926610)

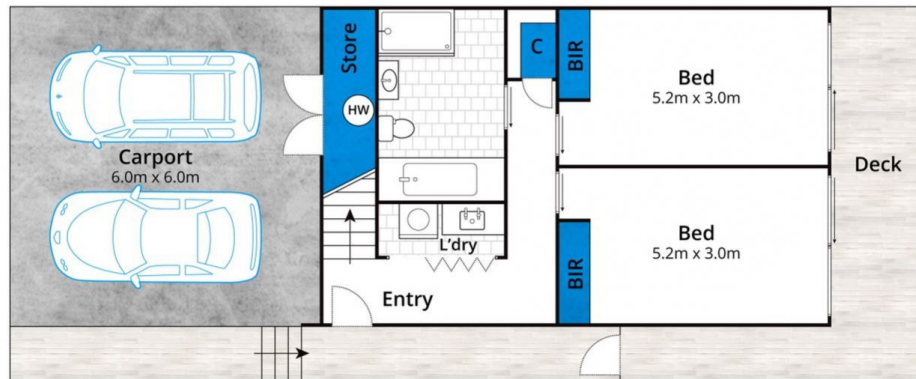
Type : Townhouse
Land Size : 188.3 sqm
View : <https://www.greateoceanproperties.com.au/5926610>



Marty Maher
0352200000



First Floor



Ground Floor

Approx House Area 157m²

Whilst bwrm.com.au has made every attempt to ensure the accuracy of the floor plan contained here, measurements are approximate and no responsibility is taken for any error, omission, or mis-statement. This plan is for illustrative purposes only.

4/143D Great Ocean Road, Anglesea

