



## 8 Narani Way FAIRHAVEN VIC

4 2 2

Offers required by 7 December 2020

Contemporary coastal living is epitomised in this beautifully designed and light filled home.

Expect to be mesmerised by the outstanding views that includes everyone's favourite elements, ocean, river, lighthouse and even some breaking surf across the river to the lighthouse and ocean beyond. This vista is framed by the extensive glazing in the large open plan living zone that flows onto the substantial sundeck area. It is the perfect entertaining space or just relaxing with loved ones. The sleek and modern kitchen includes a walk in pantry, central island breakfast bar and gas cooking. Two generous bedrooms are on this upper level. A clever floor plan gives

**Type** : House  
**Land Size** : 1018 sqm  
**View** : <https://www.greatoceanproperties.com.au/5978542>



**Marty Maher**  
0352200000

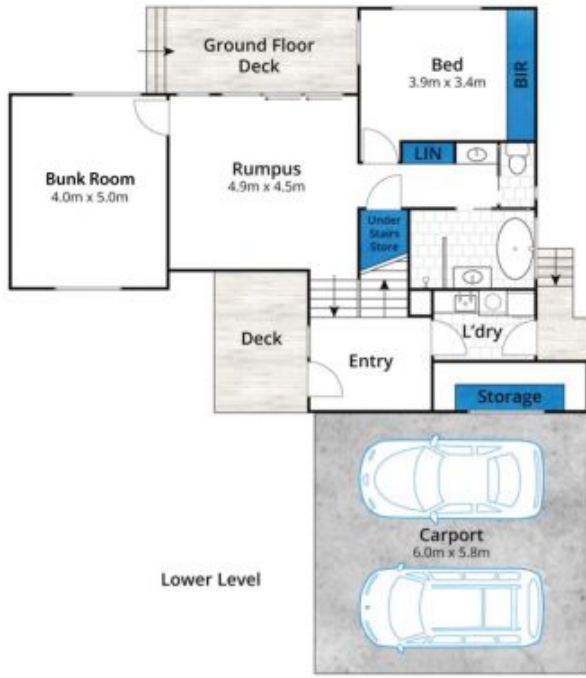


**Mim Atkinson**  
0352200000

[For full version visit the website](https://www.greatoceanproperties.com.au)

<https://www.greatoceanproperties.com.au>

5220 0000



Approx House Area 209m<sup>2</sup>

Whilst [bwrn.com.au](http://bwrn.com.au) has made every attempt to ensure the accuracy of the floor plan contained here, measurements are approximate and no responsibility is taken for any error, omission, or mis-statement. This plan is for illustrative purposes only.

## 8 Narani Way, Fairhaven

