



40a Bambra Road AIREYS INLET VIC

3 3 4

Exceptional views and liveability combine to deliver a unique and special home. Its elevated position guarantees forever views that stretch across the river valley and to Lorne. This stunning panorama is the star attraction viewed from the open plan living zone on the upper level. Complete with soaring timber lined ceilings, wood fire and sunny balcony, this is the perfect spot for unwinding or entertaining alike. The generous kitchen includes gas cooking and plentiful storage. There are three bedrooms on this level including a master suite with a peaceful garden outlook, en-suite and walk-in robe. A second bathroom, laundry and powder room complete the upstairs floor plan. The lower level offers a flexible space which can be used as a fourth bedroom, separate living or home office with an

Type : House
Land Size : 1441 sqm
View : <https://www.greatoceanproperties.com.au/5980364>



Mim Atkinson
0352200000

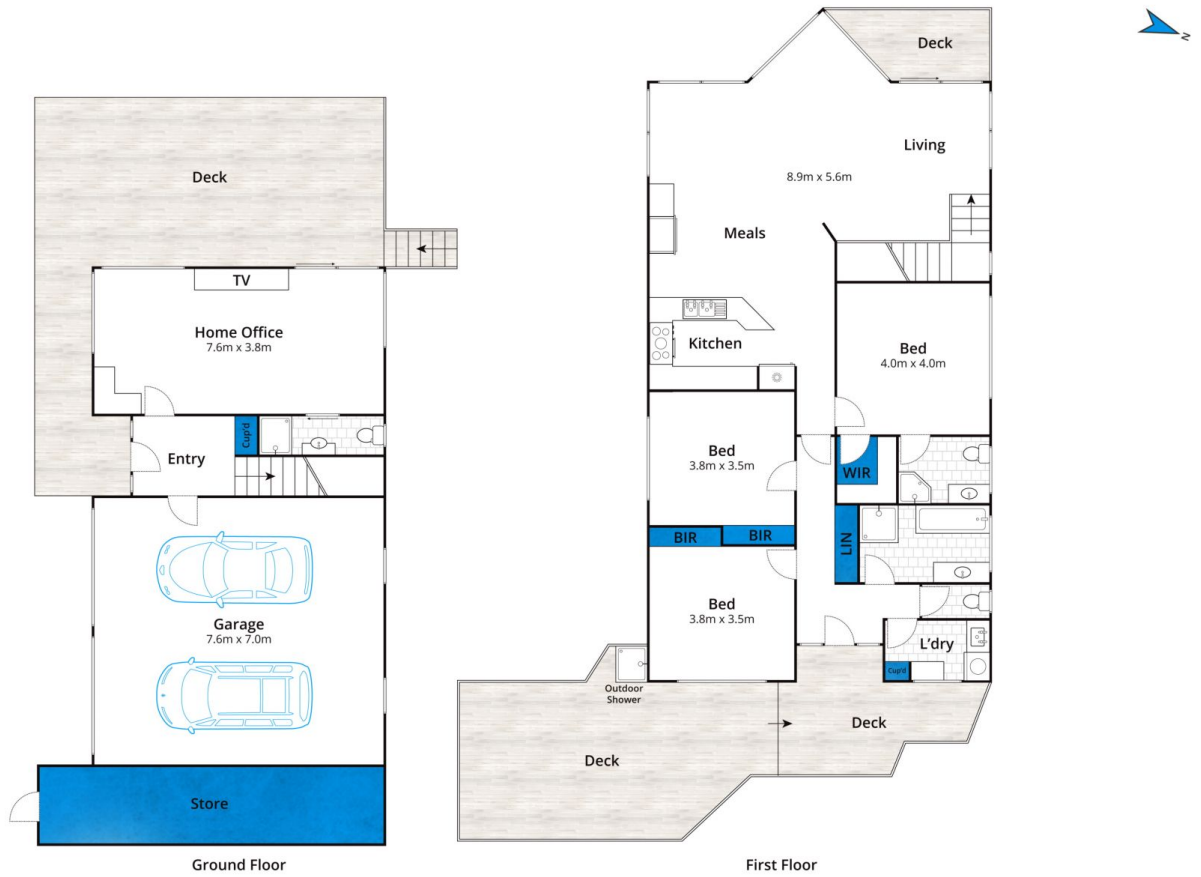


Marty Maher
0352200000

[For full version visit the website](https://www.greatoceanproperties.com.au)

<https://www.greatoceanproperties.com.au>

5220 0000



Approx House Area 260m²

Whilst bwrm.com.au has made every attempt to ensure the accuracy of the floor plan contained here, measurements are approximate and no responsibility is taken for any error, omission, or mis-statement. This plan is for illustrative purposes only.

40A Bambra Road, Aireys Inlet

