






66a Beach Road TORQUAY VIC

4  3  2 

Located in old Torquay, this exciting new home offers generous proportions and a distinctive, ultra-modern appearance. Cleverly planned for luxurious, low maintenance living by locals, built by JSB and Section Studio, it boasts 4 bedrooms (incl. downstairs master), dual living and a private north-facing alfresco.

Sophisticated, modern and undeniably chic, the crisp white interiors and burnished concrete flooring are complemented by the warmth of timber and a Besser block feature wall that enhances the entry and projects beyond the entrance door. The indoor-outdoor connection is palpable, thanks to raked ceilings, extensive glazing and clerestory windows that draw the sky views and greenery in. Full span stacker doors lead to Silvertop Ash timber

Type : House
Land Size : 306 sqm
View : <https://www.greatoceanproperties.com.au/6011031>

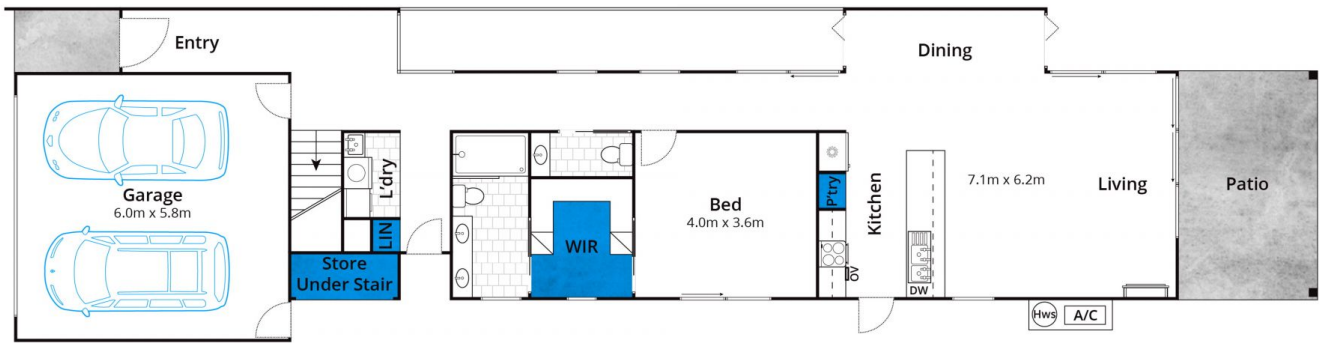
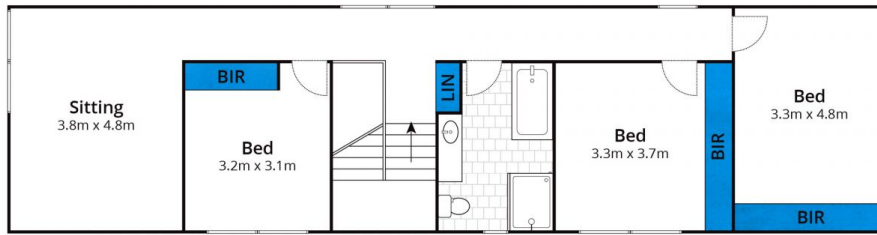


Marty Maher
0352200000

[For full version visit the website](https://www.greatoceanproperties.com.au)

<https://www.greatoceanproperties.com.au>

5220 0000



Approx House Area 247m²

Whilst bwrn.com.au has made every attempt to ensure the accuracy of the floor plan contained here, measurements are approximate and no responsibility is taken for any error, omission, or mis-statement. This plan is for illustrative purposes only.

66A Beach Road, Torquay

