

## 17 Seventh Avenue ANGLESEA VIC

5 2 4

It is hard to believe that a property this close to Pt Roadknight Beach can have such unobstructed and awe inspiring views. Capitalising on its elevated position this home makes the most of the spectacular scenery and offers a standard of liveability that will impress.

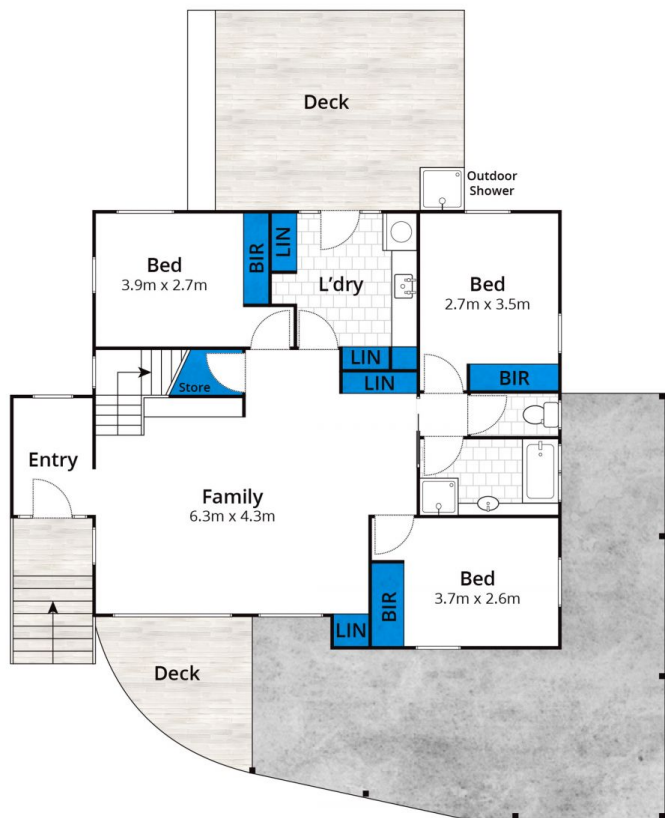
Offered over two generous levels, this Mark Gleeson designed and built home has had a recent update adding to the contemporary living. Upstairs features open plan living with 180-degree views that take in the breaking surf, sandy beaches, and the coast to Airey's Lighthouse. From the well-planned kitchen to the extensive deck for outdoor entertaining, everything about this home makes sharing it with friends and family effortless. A freestanding wood fire plus ducted heating guarantee cosy winters.

**Type** : House  
**Land Size** : 1394 sqm  
**View** : <https://www.greatoceanproperties.com.au/6016511>

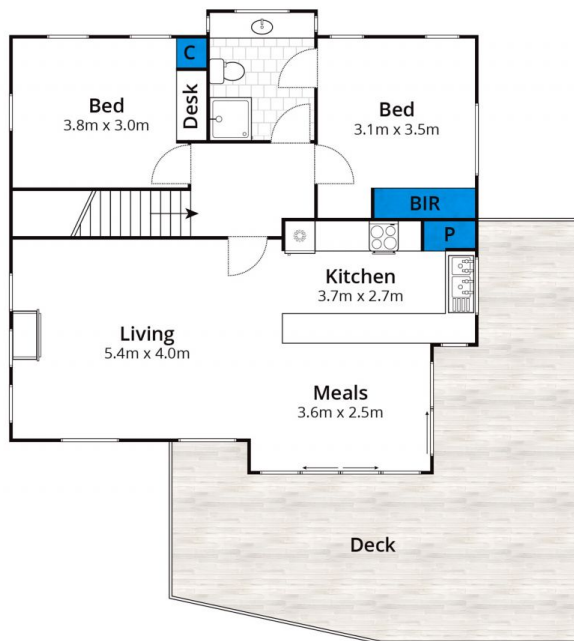


**Marty Maher**  
**0352200000**

[For full version visit the website](https://www.greatoceanproperties.com.au)



Ground Level



Upper Level

Approx House Area 157m<sup>2</sup>

Whilst [bwrn.com.au](http://bwrn.com.au) has made every attempt to ensure the accuracy of the floor plan contained here, measurements are approximate and no responsibility is taken for any error, omission, or mis-statement. This plan is for illustrative purposes only.

**17 Seventh Avenue, Anglesea**

