



243 Great Ocean Road ANGLESEA VIC

3 2 4

This property ticks all the boxes for both permanent and holiday coastal living.

Angled directly at sensational ocean views to the Aireys Inlet lighthouse and overlooking the heathlands of the Great Otway National Park, ensures that not one house will ever interrupt this ocean view either from upstairs or down. The house itself rests on a fully fenced large 1655sqm (app) allotment and boasts an abundance of features that compliments the style, position and ambiance of this amazing corner property.

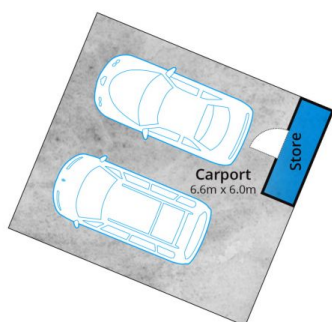
Three decks, 3 living areas, the ground floor hosts a large open plan kitchen, powder room, second toilet plus shower, great for days spent at the beach. Upstairs 3 bedrooms (all with built-in robes), master with direct sliding door access

Type : House
Land Size : 1655 sqm
View : <https://www.greateoceanproperties.com.au/6017305>

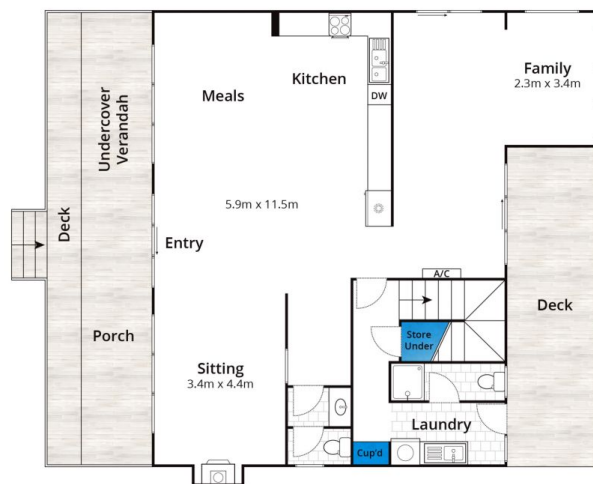


Marty Maher
0352200000

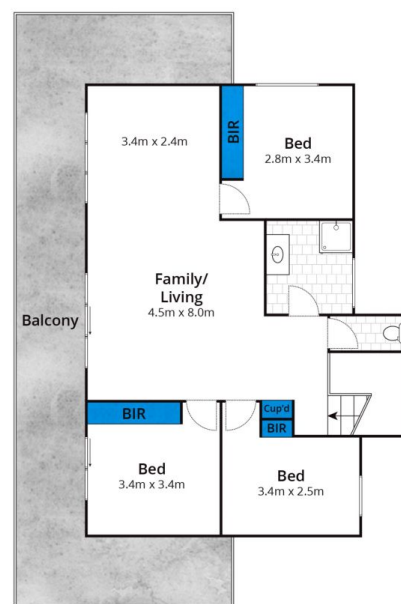
[For full version visit the website](https://www.greateoceanproperties.com.au)



(Not In Position)



Ground Floor



First Floor

Approx House Area 200m²

Whilst bwrn.com.au has made every attempt to ensure the accuracy of the floor plan contained here, measurements are approximate and no responsibility is taken for any error, omission, or mis-statement. This plan is for illustrative purposes only.

243 Great Ocean Road, Anglesea

