



37 Murray Street ANGLESEA VIC

4 2 2

This is what happens when subtle sophistication meets coastal character and charm in an ideal location. The result is a home that will satisfy all your desires especially when liveability and style are the priority.

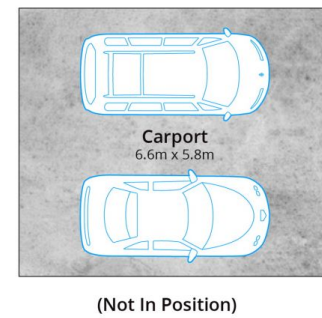
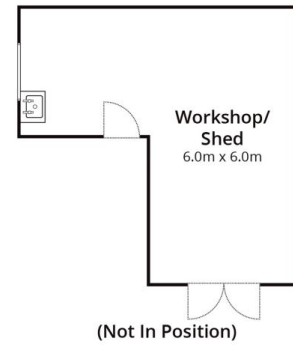
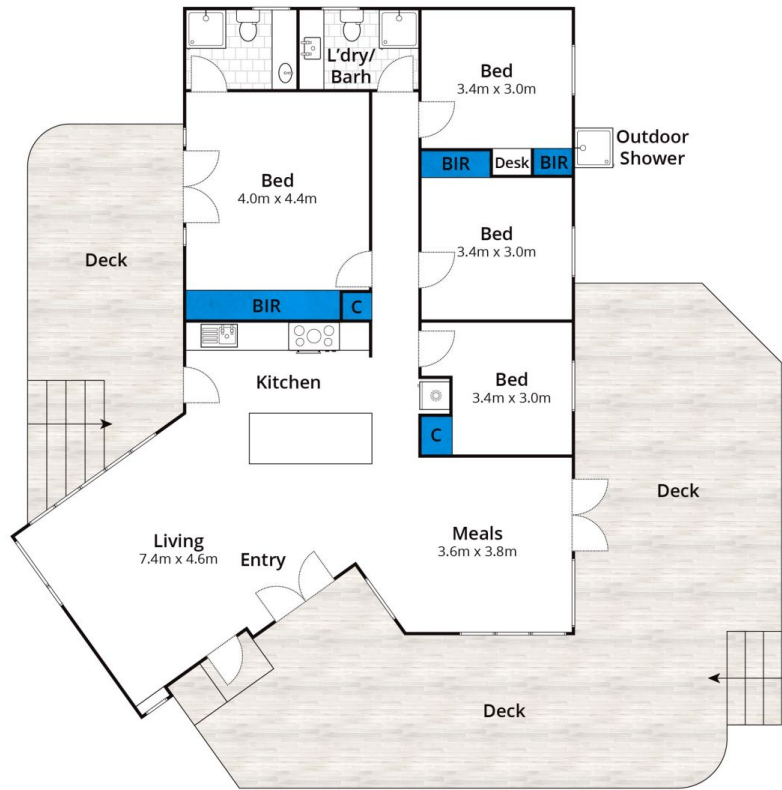
Offering single level simplicity and a flowing floor plan, features here include light filled open plan living with easy access to outdoor entertaining. This is a home for all seasons where winters are spent in cosy proximity to the open fire and summers are for throwing open the French doors and lounging on your choice of decks. The contemporary kitchen (with deck access) adds ease to entertaining with plentiful work and storage space. There are four bedrooms in total. Each offers built in robes and the master enjoys direct access to the outdoors and an en-suite. A family bathroom with laundry completes the

Type : House
Land Size : 954 sqm
View : <https://www.greatoceanproperties.com.au/6101166>



Marty Maher
0352200000

[For full version visit the website](https://www.greatoceanproperties.com.au)



Approx. Area 125m²

Whilst bwrm.com.au has made every attempt to ensure the accuracy of the floor plan contained here, measurements are approximate and no responsibility is taken for any error, omission, or mis-statement. This plan is for illustrative purposes only.

37 Murray Street, Anglesea

