



### 13 Hartley Street AIREYS INLET VIC

3 2 4

Offers required by 31st January 2021

Situated almost exactly half way between two popular beaches in the heart of the ever sought after ocean side precinct in Aireys Inlet, this well presented 3BR coastal residence is a great opportunity around the median price point. Set on a 919sqm (app) native allotment, the 3 level residence enjoys a large open plan and with the residence running east-west, it receives a large exposure to northern light. With sun decks on the north and west side the sunny aspect can be enjoyed year round. The 3 bedrooms are serviced by two bathrooms including one being an ensuite off the upstairs main bedroom. The property has a warm inviting feel to it and comes fully furnished. There is a large 4 car carport at the front of the property and the residence

**Type** : House  
**Land Size** : 919 sqm  
**View** : <https://www.greatoceanproperties.com.au/6141176>



**Marty Maher**  
**0352200000**

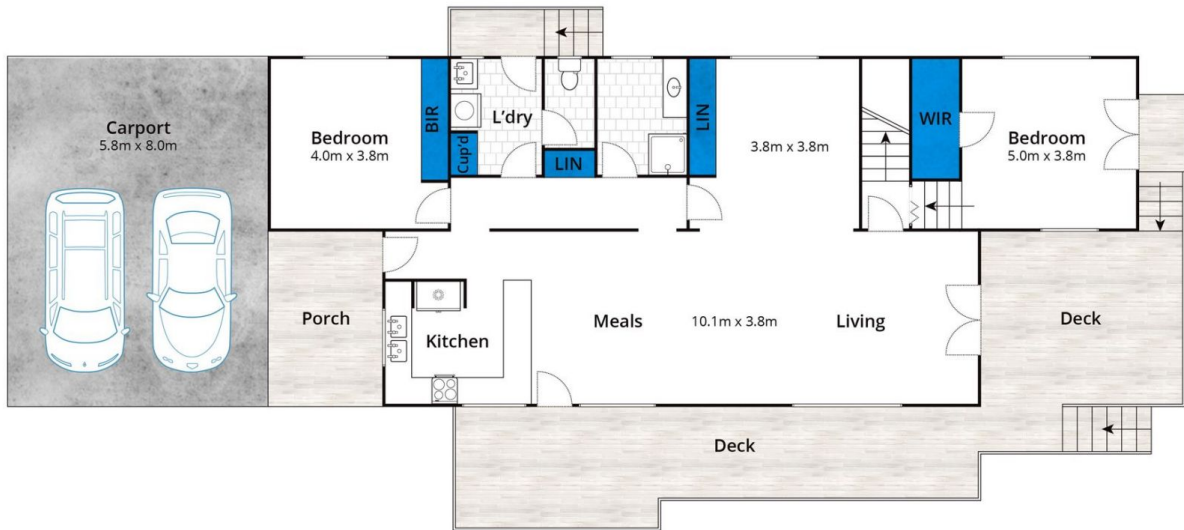
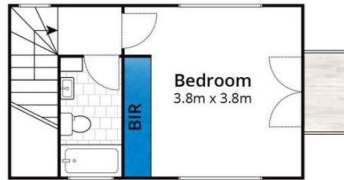


**Mim Atkinson**  
**0352200000**

[For full version visit the website](https://www.greatoceanproperties.com.au)

<https://www.greatoceanproperties.com.au>

5220 0000



Approx House Area 169m<sup>2</sup>

Whilst [bwrm.com.au](http://bwrm.com.au) has made every attempt to ensure the accuracy of the floor plan contained here, measurements are approximate and no responsibility is taken for any error, omission, or mis-statement. This plan is for illustrative purposes only.

# 13 Hartley Street, Aireys Inlet

