



35-36 Eagle Rock Parade AIREYS INLET VIC

5 2 4

Enjoying the most spectacular view in Aireys Inlet, looking along the beautiful sandstone cliffs and over the breaking surf to Eagle Rock and the sentinel Split Point Lighthouse. This is a view that only a handful of properties will ever enjoy.

The 2561sqm (app) property also enjoys excellent privacy and immediate access to the beautiful Sandy Gully Beach.

This stunning view, privacy and beach access combination is the most sought after and rarest configurations available on the Great Ocean Road.

It will require a buyer of means to fully unlock the potential in this property however the end result will be worth it.

Type : House
Land Size : 2561 sqm
View : <https://www.greatoceanproperties.com.au/6166955>

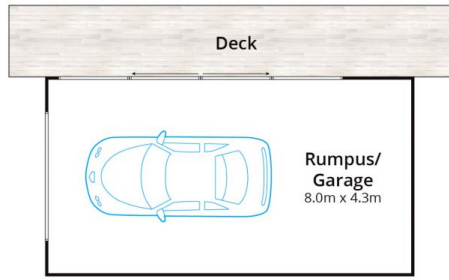


Marty Maher
0352200000

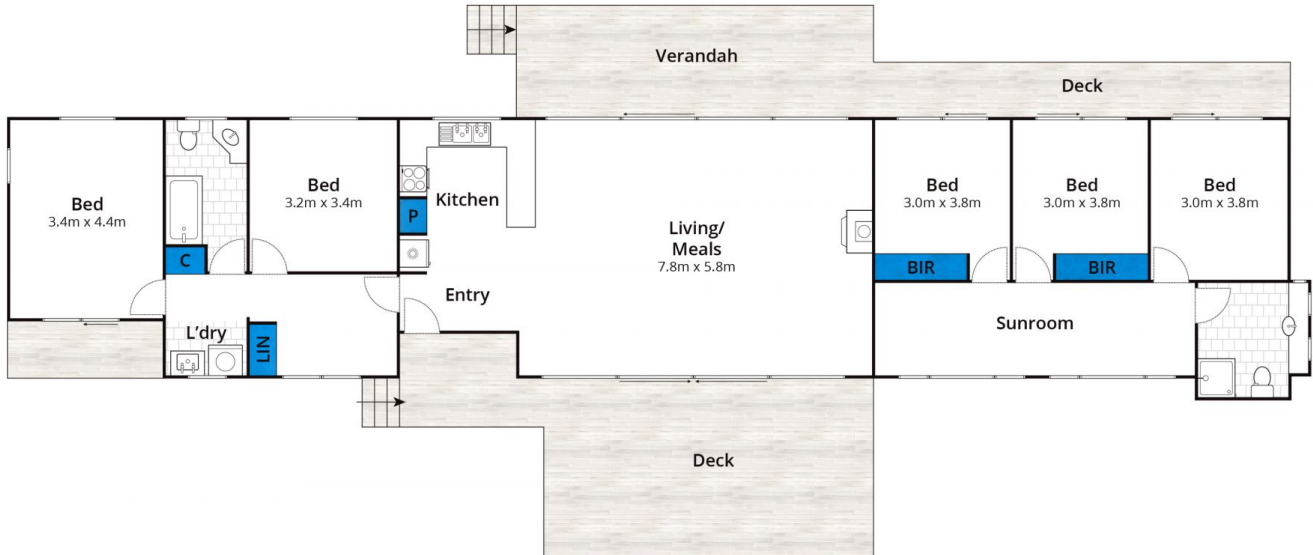


Mim Atkinson
0352200000

[For full version visit the website](https://www.greatoceanproperties.com.au)



(Not In Position)



Approx. Area 156m²

Whilst bwrn.com.au has made every attempt to ensure the accuracy of the floor plan contained here, measurements are approximate and no responsibility is taken for any error, omission, or mis-statement. This plan is for illustrative purposes only.

35 Eagle Rock Parade, Aireys Inlet

