



## 6 Pickworth Drive ANGLESEA VIC

5 2 5

When expansive views, spaciousness and light filled living combine the result is a home that is a pleasure to live in. This property possesses all of this and more, plus it is positioned in a popular and tranquil location.

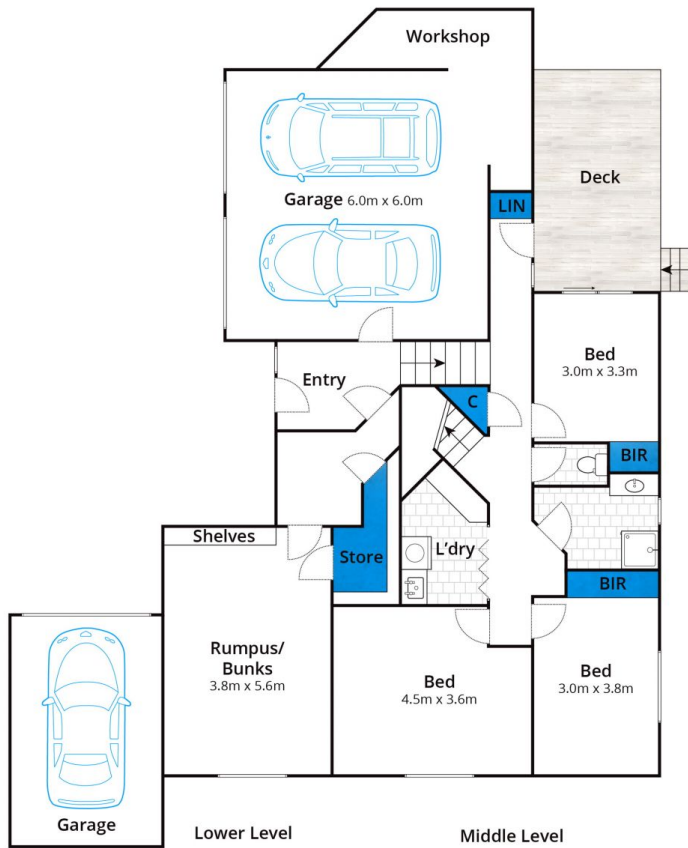
The split-level design flows over three floors. The upper-level living zone makes the most of the spectacular outlook taking in the heath and coast to Point Addis. North facing and voluminous it features soaring ceilings, extensive glazing, a freestanding log fire and effortless flow to outdoor entertaining. A generous kitchen and meals area also enjoy the views, as does the master suite with en-suite, walk-in robe, and private balcony. Three additional bedrooms are on the middle level along with a family bathroom, laundry, and plentiful storage. A rumpus room on the ground floor offers the perfect games or fifth

**Type** : House  
**Land Size** : 836 sqm  
**View** : <https://www.greatoceanproperties.com.au/6195609>



**Marty Maher**  
**0352200000**

[For full version visit the website](https://www.greatoceanproperties.com.au)



Approx House Area 280m<sup>2</sup>

Whilst [bwrm.com.au](http://bwrm.com.au) has made every attempt to ensure the accuracy of the floor plan contained here, measurements are approximate and no responsibility is taken for any error, omission, or mis-statement. This plan is for illustrative purposes only.

## 6 Pickworth Drive, Anglesea

