



16 Philip Street AIREYS INLET VIC

3 2 3

Offers required by 28 February

Located in one of the most sought after pockets of Aireys Inlet, this classic 3BR beach house is set on a substantial 1408sqm (app) native landscaped allotment within walking distance to all your needs. The open plan living area opens onto 2 verandas and with its high raking ceilings, painted timber walls and overhead windows, it is a bright, positive space that is a classic beach house in its truest sense. The residence is beautifully presented and features 3 bedrooms, 2 on the upper level and 1 on the lower level, wood heater, split system air conditioning. There is a small second living area downstairs that is an ideal TV room or home office. There is also enormous scope for extending the residence on the lower level that is currently used for

Type : House
Land Size : 1408 sqm
View : <https://www.greatoceanproperties.com.au/6246670>



Marty Maher
0352200000

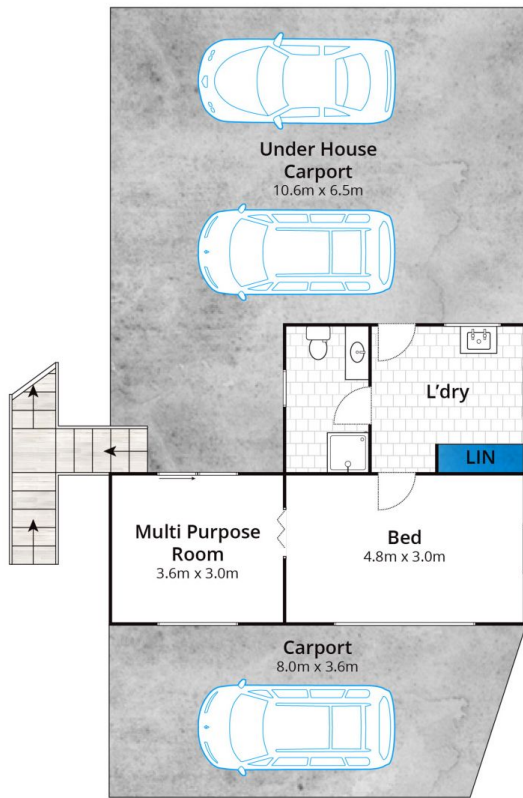


Mim Atkinson
0352200000

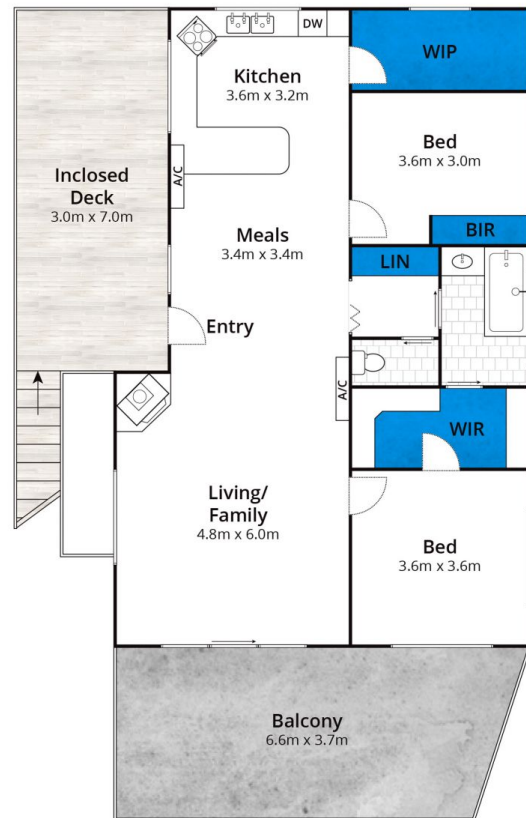
[For full version visit the website](https://www.greatoceanproperties.com.au)

<https://www.greatoceanproperties.com.au>

5220 0000



Lower Level



Upper Level

Whilst bwrm.com.au has made every attempt to ensure the accuracy of the floor plan contained here, measurements are approximate and no responsibility is taken for any error, omission, or mis-statement. This plan is for illustrative purposes only.

16 Philip Street, Aireys Inlet

