



## 65 Wybellenna Drive FAIRHAVEN VIC

4 2 2

This split-level home is a contemporary coastal retreat where outstanding views provide a mesmerising backdrop. Beautifully presented, it features a spacious light filled open plan living zone on the upper level. This is the spot to enjoy the views of breaking surf and the Split Point Lighthouse while relaxing or entertaining on the large deck with family and friends. Or picture cosy winters in front of the freestanding log fire. There are even views to enjoy while cooking in the well-planned kitchen.

Further highlights include a second living zone with polished concrete floors on the ground floor, two bathrooms and four spacious bedrooms with plenty of storage and a tranquil garden outlook.

**Type** : House  
**Land Size** : 836 sqm  
**View** : <https://www.greatoceanproperties.com.au/6263046>

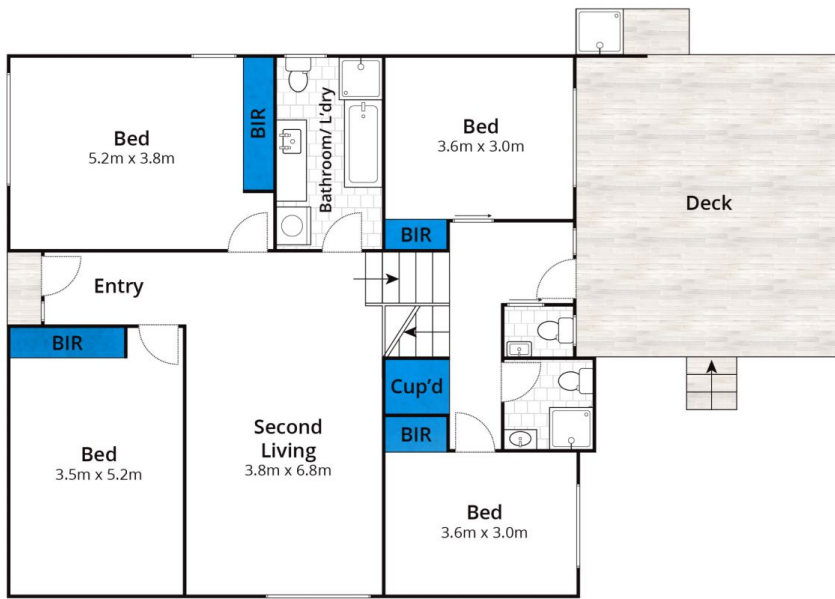


**Mim Atkinson**  
0352200000

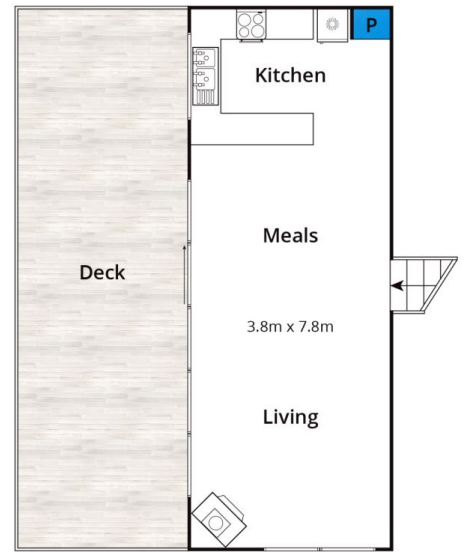


**Marty Maher**  
0352200000

[For full version visit the website](https://www.greatoceanproperties.com.au)



Ground Floor



First Floor

Approx. Area 160m<sup>2</sup>

Whilst [bwrn.com.au](http://bwrn.com.au) has made every attempt to ensure the accuracy of the floor plan contained here, measurements are approximate and no responsibility is taken for any error, omission, or mis-statement. This plan is for illustrative purposes only.

**65 Wybellenna Drive, Fairhaven**

