



65a Central Avenue TORQUAY VIC

3 2 2

Your search for a luxurious, low maintenance, centrally located seaside abode is over! Situated in old Torquay, this brand-new home features impressive craftsmanship, finishes and landscaping. Be greeted by ocean views from the driveway, with the promise of an even greater vista from the upper deck. Designed to capture the easterly aspect, you will never grow tired of gazing across the ocean to the distant shores of Victoria's East Coast.

Fresh white interiors are complemented by Vic Ash flooring and stairs, floating timber shelving, high ceilings and outside greenery. These beautiful natural accents amplify the sense of wellbeing and exude ease of living. The neutral colour palette continues in the bedrooms, where wool carpets underfoot amplify the sanctuary-like

Type : Townhouse
Land Size : 245 sqm
View : <https://www.greatoceanproperties.com.au/6286323>

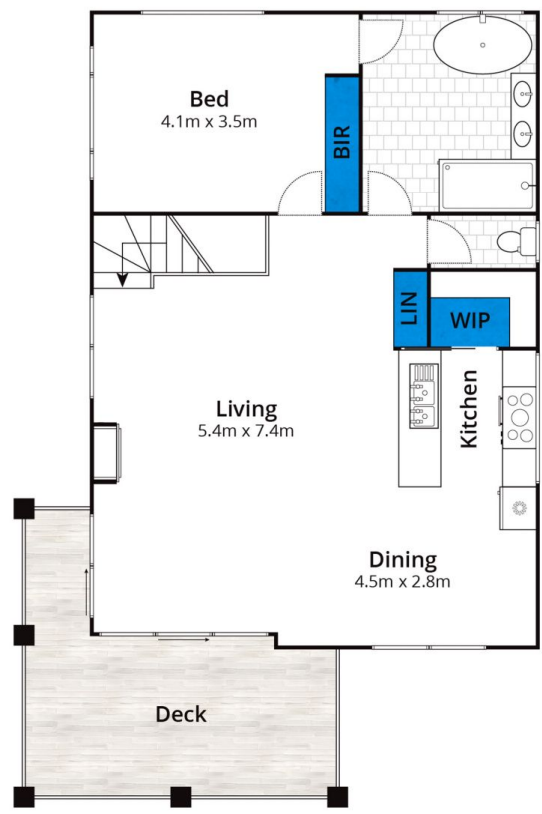
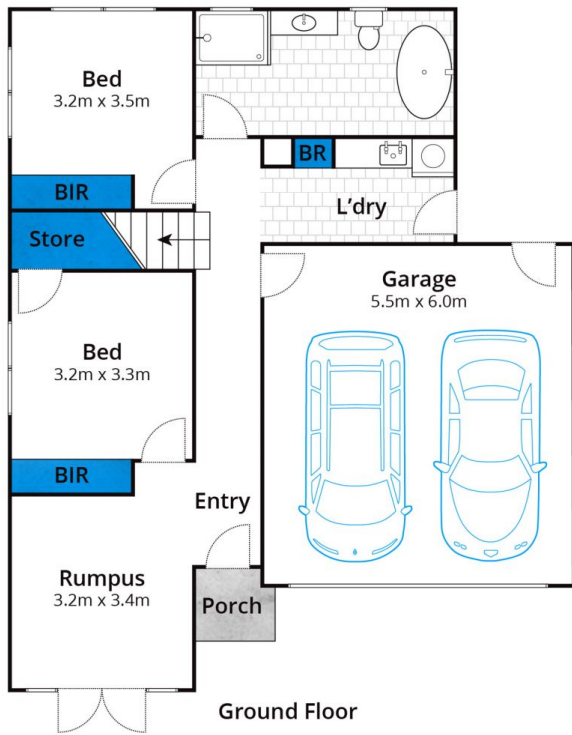


Marty Maher
0352200000



Michelle McDonald
0352631100

[For full version visit the website](https://www.greatoceanproperties.com.au)



Whilst bwrn.com.au has made every attempt to ensure the accuracy of the floor plan contained here, measurements are approximate and no responsibility is taken for any error, omission, or mis-statement. This plan is for illustrative purposes only.

65A Central Avenue, Torquay

