



**24b Melba Parade ANGLESEA VIC**

5 🏠 4 🚗 5 🚗

This contemporary coastal home set on the cliff tops offers 180-degree uninterrupted ocean views. Its considered design, sleek lines and subtle finishes deliver a striking yet minimal impact to encourage all eyes to focus on the breathtaking views. Stretching from Point Addis to Point Roadknight, the outlook is world class and on display throughout most of the home.

Architect David Luck has created a home that is equally suitable as a quiet space to enjoy alone, or to generously open up and share with family and friends.

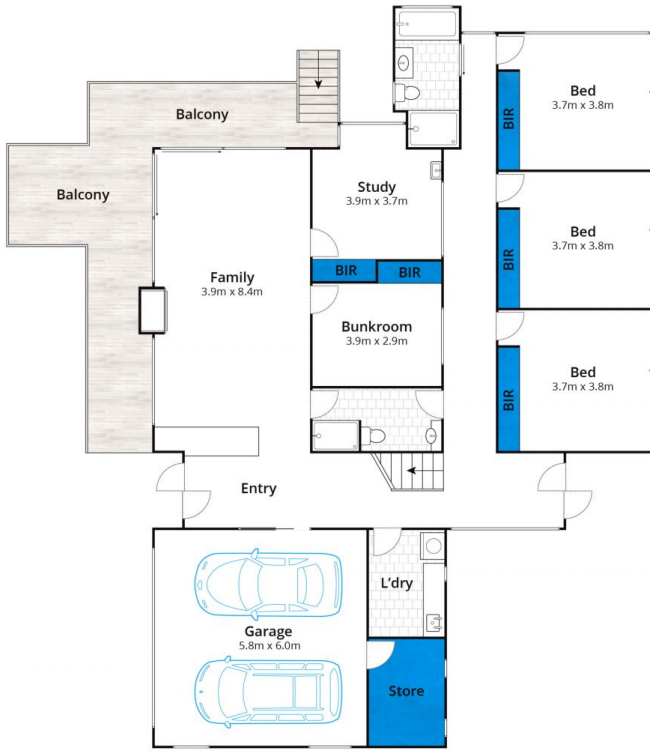
Upstairs floor to ceiling glazing and glazed balustrades ensures the vista from the large open plan living dining and kitchen is uninterrupted. The panorama can also be enjoyed while in the expertly crafted kitchen and from the restful master suite.

**Type** : House  
**Land Size** : 920 sqm  
**View** : <https://www.greatoceanproperties.com.au/6324470>

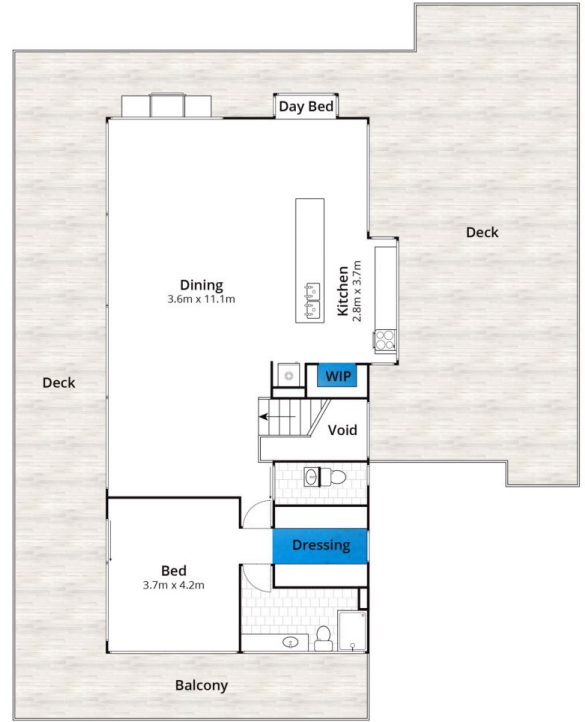


**Marty Maher**  
**0352200000**

[For full version visit the website](https://www.greatoceanproperties.com.au)



Ground Floor



First Floor

Approx House Area 329m<sup>2</sup>

Whilst [bwrn.com.au](http://bwrn.com.au) has made every attempt to ensure the accuracy of the floor plan contained here, measurements are approximate and no responsibility is taken for any error, omission, or mis-statement. This plan is for illustrative purposes only.

## 24B Melba Parade, Anglesea

