



1/2 Tonge Street ANGLESEA VIC

3 2 2

1/2 Tonge Street represents a rare opportunity to acquire a single level beach house located in the most coveted area of Anglesea and within a stone's throw to the Main Beach and Surf Club.

Privately tucked away and situated on a 406sqm (app) allotment perfect for coastal living & entertaining. This beautifully presented 3-bedroom home is simply flawless with its flowing floorplan and generously proportioned rooms. The light filled open plan living and dining seamlessly flows from the living area to the private sun deck overlooking the rear grassed backyard. Other features include, a well-appointed kitchen, cosy winter comfort with the ambient slow combustion wood fire, two bathrooms, multiple covered outdoor areas, fully fenced and secure backyard and a carport with ample off-street parking.

Type : House
Land Size : 406 sqm
View : <https://www.greatoceanproperties.com.au/6335489>

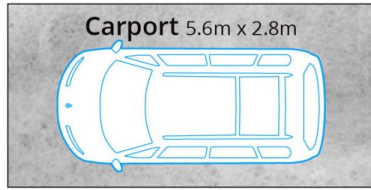


Marty Maher
0352200000

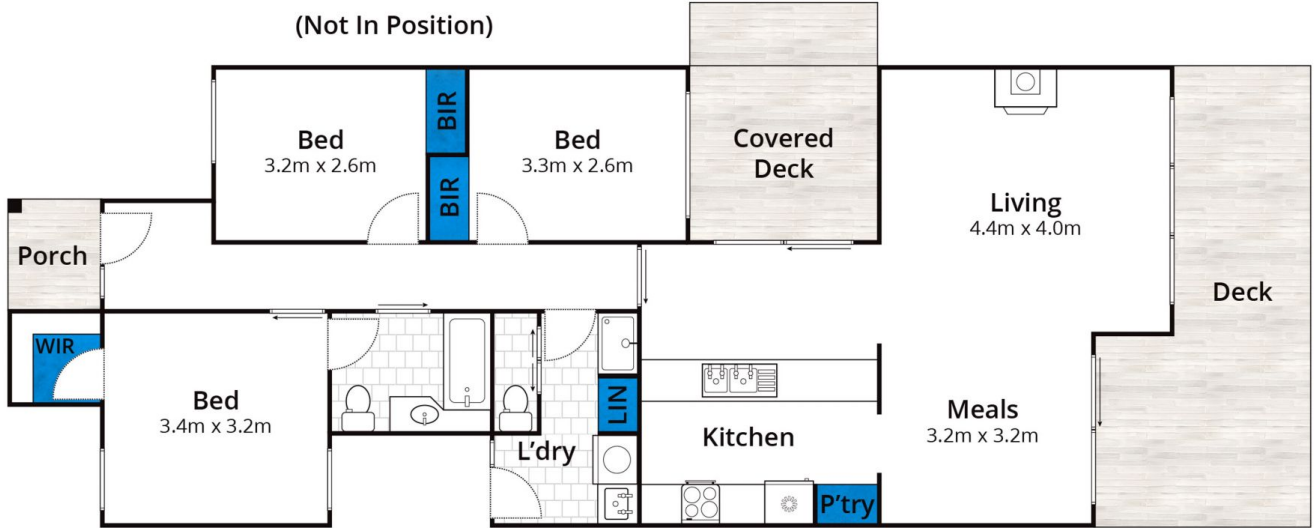
[For full version visit the website](https://www.greatoceanproperties.com.au)

<https://www.greatoceanproperties.com.au>

5220 0000



(Not In Position)



Whilst bwrn.com.au has made every attempt to ensure the accuracy of the floor plan contained here, measurements are approximate and no responsibility is taken for any error, omission, or mis-statement. This plan is for illustrative purposes only.

1/2 Tonge Street, Anglesea

