



25 Forest Drive FAIRHAVEN VIC

4 🛏 2 🚿 2 🚗

This beautifully presented, north facing residence has genuine appeal from the moment you set foot onto the property. Very much designed to sit comfortably in its native setting, the 4BR design was a finalist in the 2008 HIA Housing Awards and is both functional and practical. The upper level open plan living area is simply a beautiful space with its native outlook, north facing light and polished timber floors. The contemporary kitchen, wood heater and split system airconditioning all adds to the appeal of this space. The living area opens onto a substantial sundeck area with a very large master bedroom (with ensuite) on this level also enjoying this feature. The lower level provides ample accommodation in 3 more bedrooms, second living area, bathroom (with spa) and laundry. Any potential purchaser will be impressed with the immaculate

Type : House
Land Size : 1027 sqm
View : <https://www.greatoceanproperties.com.au/6408059>

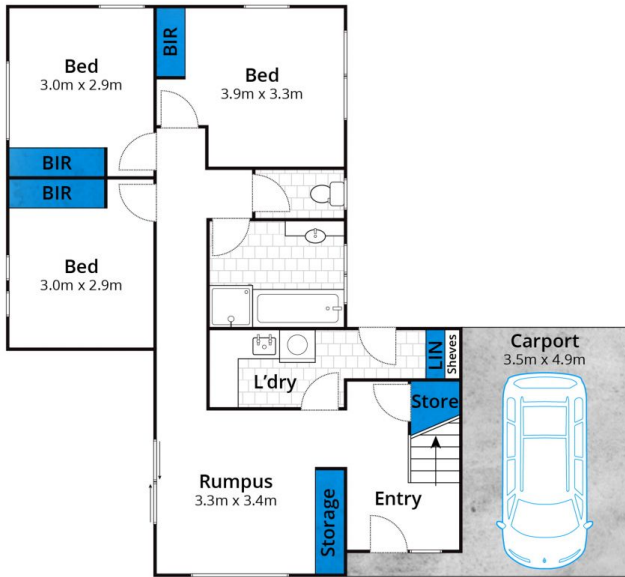


Marty Maher
0352200000

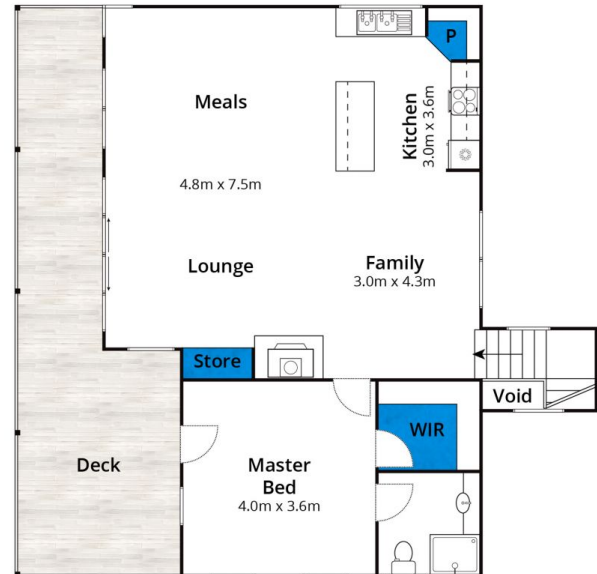


Mim Atkinson
0352200000

[For full version visit the website](https://www.greatoceanproperties.com.au)



Ground Floor



First Floor

Whilst bwrn.com.au has made every attempt to ensure the accuracy of the floor plan contained here, measurements are approximate and no responsibility is taken for any error, omission, or mis-statement. This plan is for illustrative purposes only.

25 Forest Drive, Fairhaven