



## 24A Pearse Road AIREYS INLET VIC

3 2 2

Here is a home that showcases intelligent design and offers a contemporary beach house experience. With superb coastal and valley views, it is immaculately presented and ready to go.

Offered over two levels, the upstairs open plan living zone capitalises on its elevated position to make the most of the expansive views. With pitched ceilings, plentiful glazing and beautiful polished timber floors, this is the spot to relax or effortlessly entertain family and friends. There is seamless connection to two separate outdoor living areas and the well-planned kitchen features quality appliances and ample work and storage space. A clever touch sees the master suite access a semi en-suite bathroom and powder room via a generous walk through robe.

**Type** : House  
**Land Size** : 449.5 sqm  
**View** : <https://www.greatoceanproperties.com.au/6421947>



**Marty Maher**  
0352200000

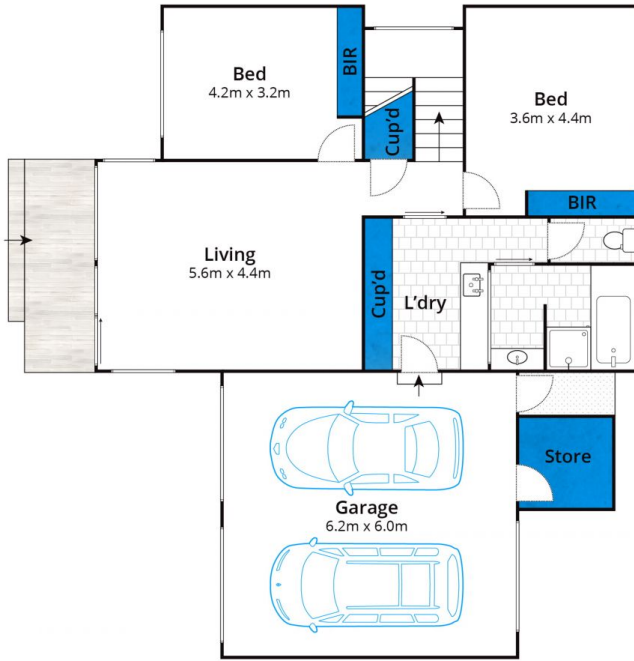


**Mim Atkinson**  
0352200000

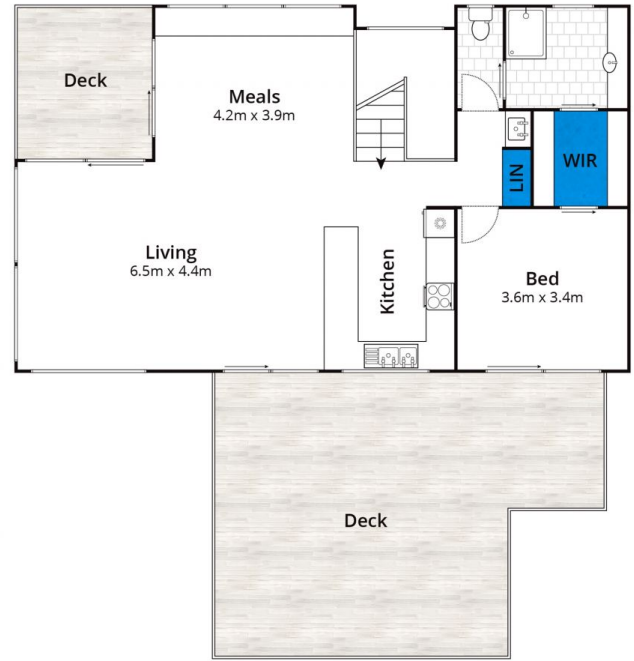
[For full version visit the website](https://www.greatoceanproperties.com.au)

<https://www.greatoceanproperties.com.au>

5220 0000



Ground Floor



First Floor

Approx House Area 215m<sup>2</sup>

Whilst [bwrm.com.au](http://bwrm.com.au) has made every attempt to ensure the accuracy of the floor plan contained here, measurements are approximate and no responsibility is taken for any error, omission, or mis-statement. This plan is for illustrative purposes only.

**24A Pearse Road, Aireys Inlet**

