



4 Eagle Avenue ANGLESEA VIC

2  1  1 

Harness the exceptional potential presented by this profoundly original home sited on a generous 585sqm (app) offering the prospect of updating when ready.

Charming and character filled; this beach house is quietly tucked away in a peaceful enclave with the golf course only a short stroll away.

Presented in original condition with a retro kitchen & meals area overlooking the lounge room, this home is well presented, is also comfortable, bright, light & family-ready! It includes 2 generous bedrooms, a central bathroom with bath; full sized laundry and separate toilet. Additional highlights include a sunny front verandah, separate lock up garage with ample storage & a grassed back yard ideal for all season fun.

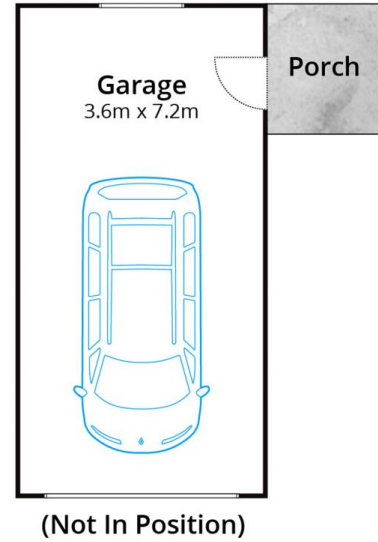
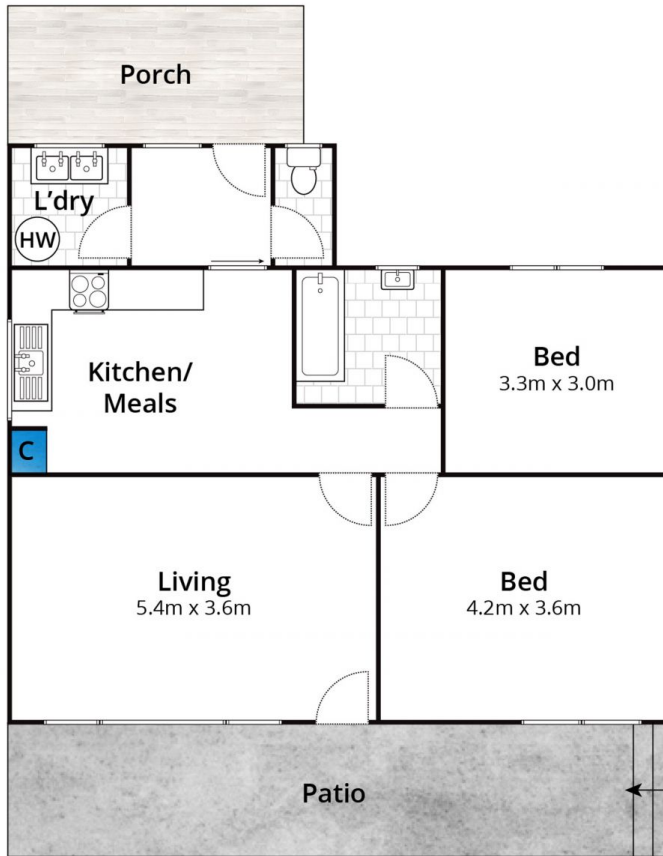
This home offers immediate liveability with outstanding

Type : House
Land Size : 585 sqm
View : <https://www.greatoceanproperties.com.au/6438288>



Marty Maher
0352200000

[For full version visit the website](https://www.greatoceanproperties.com.au)



Approx House Area 74m²

Whilst bwrn.com.au has made every attempt to ensure the accuracy of the floor plan contained here, measurements are approximate and no responsibility is taken for any error, omission, or mis-statement. This plan is for illustrative purposes only.

4 Eagle Avenue, Anglesea

