



3 Russell Avenue ANGLESEA VIC

4 2 2

From the soaring double-height ceilings that amplify the sense of space, to the picturesque bush setting and bamboo screened deck, this character-filled and much-loved family home offers a versatile floorplan that exudes a calming ambience in a private hideaway.

The kitchen, dining and living area boast verdant backdrops through every window, overlooking low maintenance gardens and neighbouring towering gums that soothe and inspire. Two bedrooms upstairs open onto a west-facing sunny deck, promising an intrinsic connection to nature.

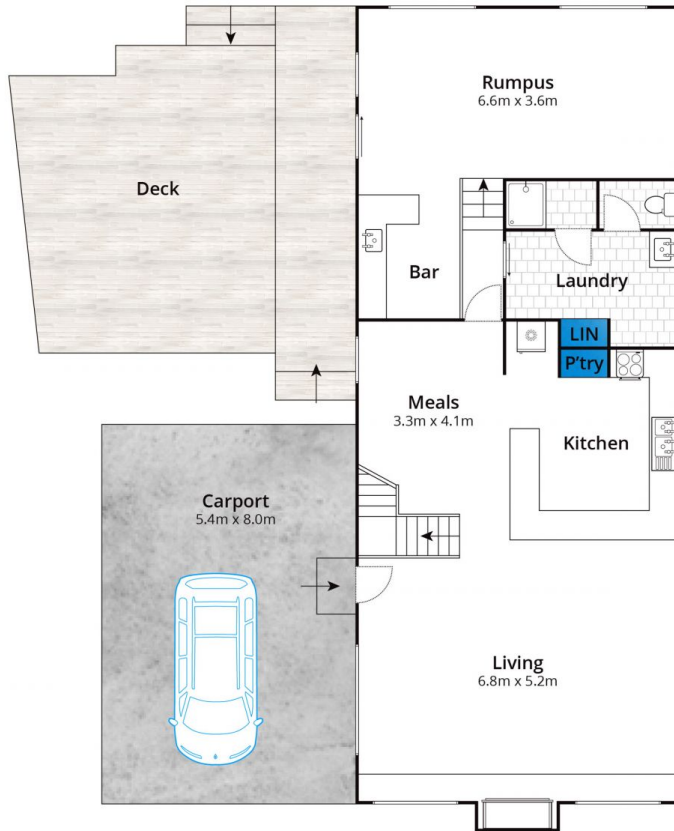
Set on a large 669sqm allotment in a quiet local neighbourhood, this location offers easy access to town via the walking trails of Kuarka Dorla Nature Reserve, with the Golf Course, Coogoorah Park and river all within 10mins

Type : House
Land Size : 669 sqm
View : <https://www.greatoceanproperties.com.au/6439788>

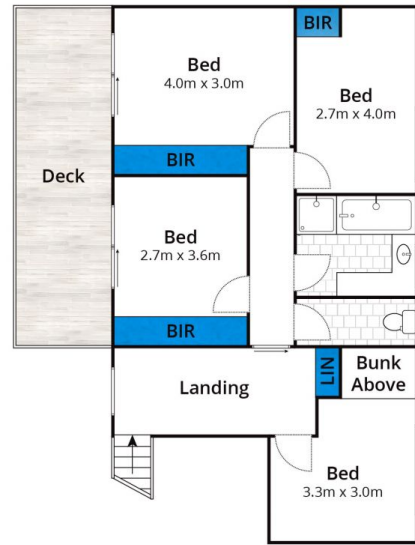


Marty Maher
0352200000

[For full version visit the website](https://www.greatoceanproperties.com.au)



Ground Floor



First Floor

Approx House Area 183m²

Whilst bwrn.com.au has made every attempt to ensure the accuracy of the floor plan contained here, measurements are approximate and no responsibility is taken for any error, omission, or mis-statement. This plan is for illustrative purposes only.

3 Russell Avenue, Anglesea

