



17 Eighth Avenue ANGLESEA VIC

3 **2** **2**

AUCTION: 19TH JUNE 2021 AT 11AM

****REGISTER WITH OUR OFFICE TO CONFIRM YOUR ATTENDANCE**

Offering a rare combination of expansive ocean views, treetop vistas and close proximity to the beach, this elevated home on the corner of Sixth Ave seemingly rises above its environment. Ascending to the first floor, impressive full span glazing reveals the stunning natural world around you; picture windows frame the exquisite details of gumtrees in the foreground, sweeping treed views and the distant silhouette of Airey's Inlet. Eyes are drawn to the hero of all beach house views, the protruding and iconic Point Roadknight. Whether you are inside by the fireplace, or relaxing on the entertainer's deck, you will

Type : House
Land Size : 697 sqm
View : <https://www.greatoceanproperties.com.au/6445889>

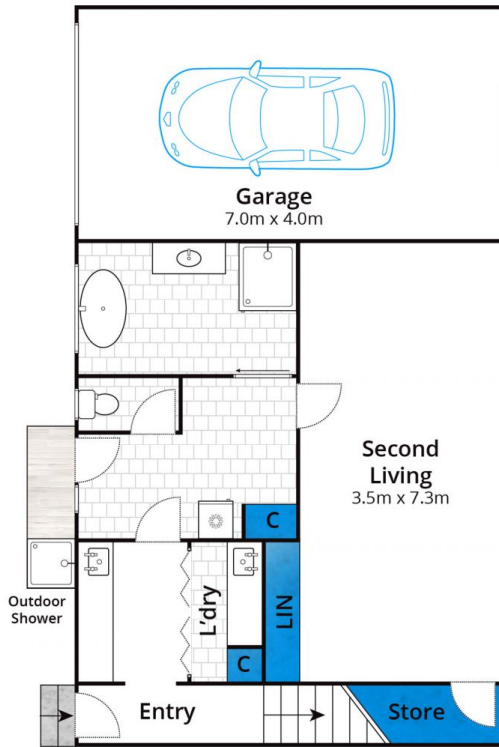


Marty Maher
0352200000

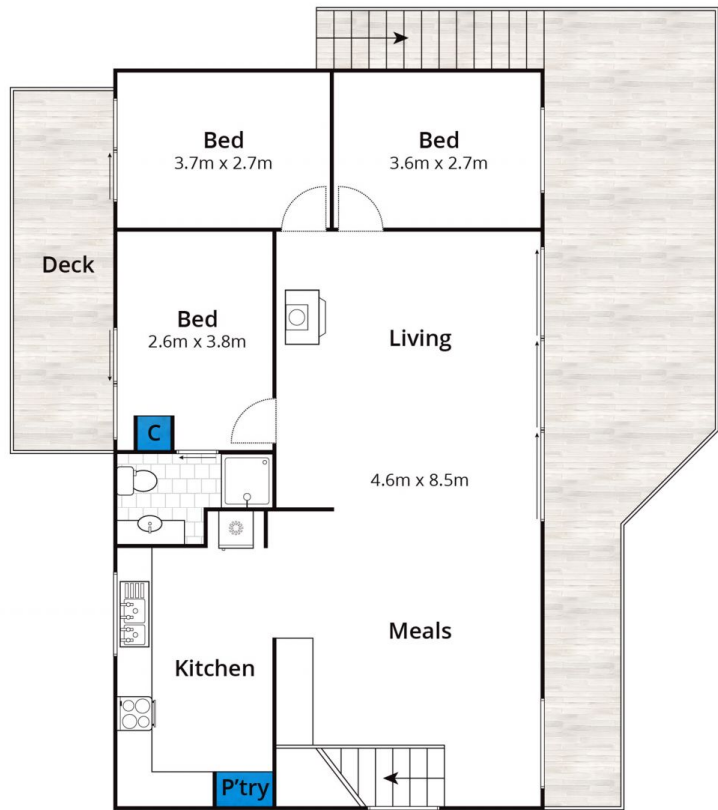
[For full version visit the website](https://www.greatoceanproperties.com.au)

<https://www.greatoceanproperties.com.au>

5220 0000



Ground Floor



First Floor

Approx House Area 190m²

Whilst bwrm.com.au has made every attempt to ensure the accuracy of the floor plan contained here, measurements are approximate and no responsibility is taken for any error, omission, or mis-statement. This plan is for illustrative purposes only.

17 Eighth Avenue, Anglesea

