



## 12 Swallowtail Drive TORQUAY VIC

3 2 2

Prepare to be impressed the moment you arrive at this stylish 3BR home in Zeally Sands, one of Torquay's most popular and family friendly estates. Set in a quiet, non-thoroughfare street, this easily maintained home has landscaped gardens, a covered alfresco and extensive north-facing paved area. Coastal contemporary interiors and well-appointed living and sleeping quarters set the tone for a laidback lifestyle just moments to beaches, schools and community facilities.

Two distinctive living rooms provide dedicated space for retreat and entertainment, or a separate place for the kids to play. A sophisticated kitchen with north-facing panoramic window features quality stainless-steel appliances, including an electric oven and gas cooktop, dishwasher

**Type** : House  
**Land Size** : 512 sqm  
**View** : <https://www.greatoceanproperties.com.au/6454351>

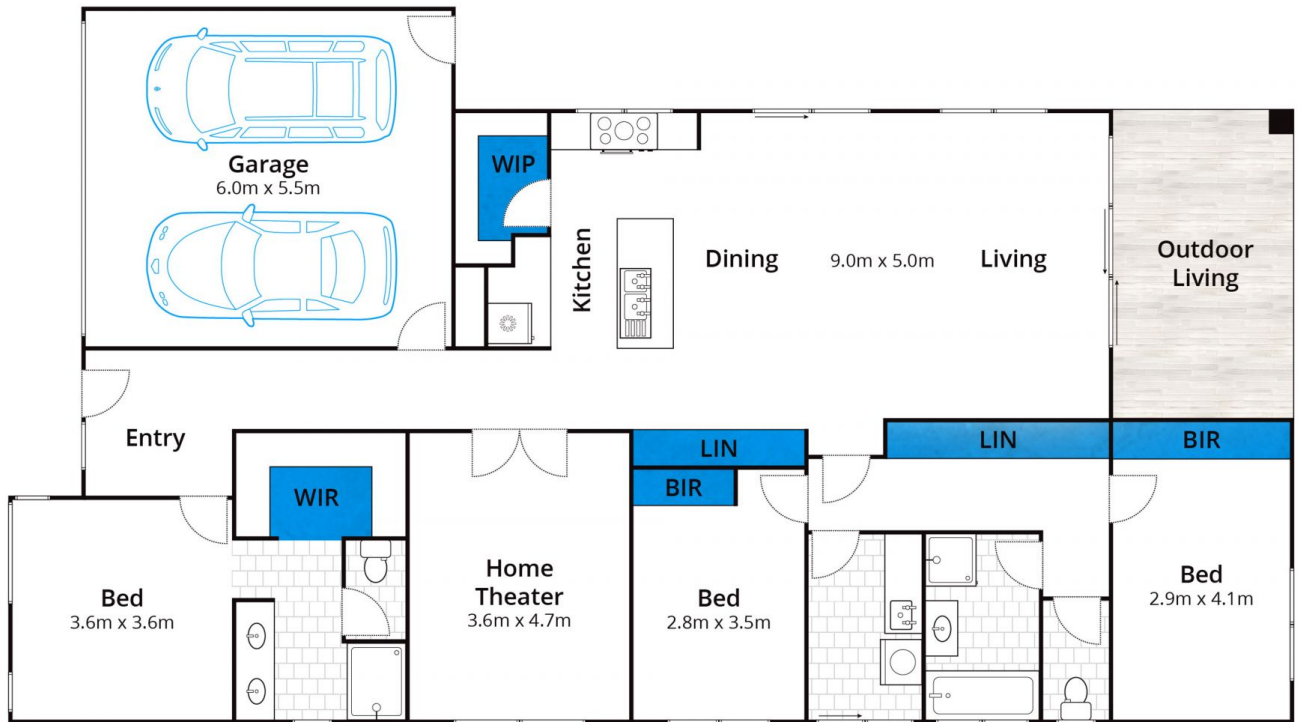


**Marty Maher**  
0352200000



**Michelle McDonald**  
0352631100

[For full version visit the website](https://www.greatoceanproperties.com.au)



Approx House Area 198m<sup>2</sup>

Whilst [bwrn.com.au](http://bwrn.com.au) has made every attempt to ensure the accuracy of the floor plan contained here, measurements are approximate and no responsibility is taken for any error, omission, or mis-statement. This plan is for illustrative purposes only.

**12 Swallowtail Drive, Torquay**

