



63 Camp Road ANGLESEA VIC

2 1 2

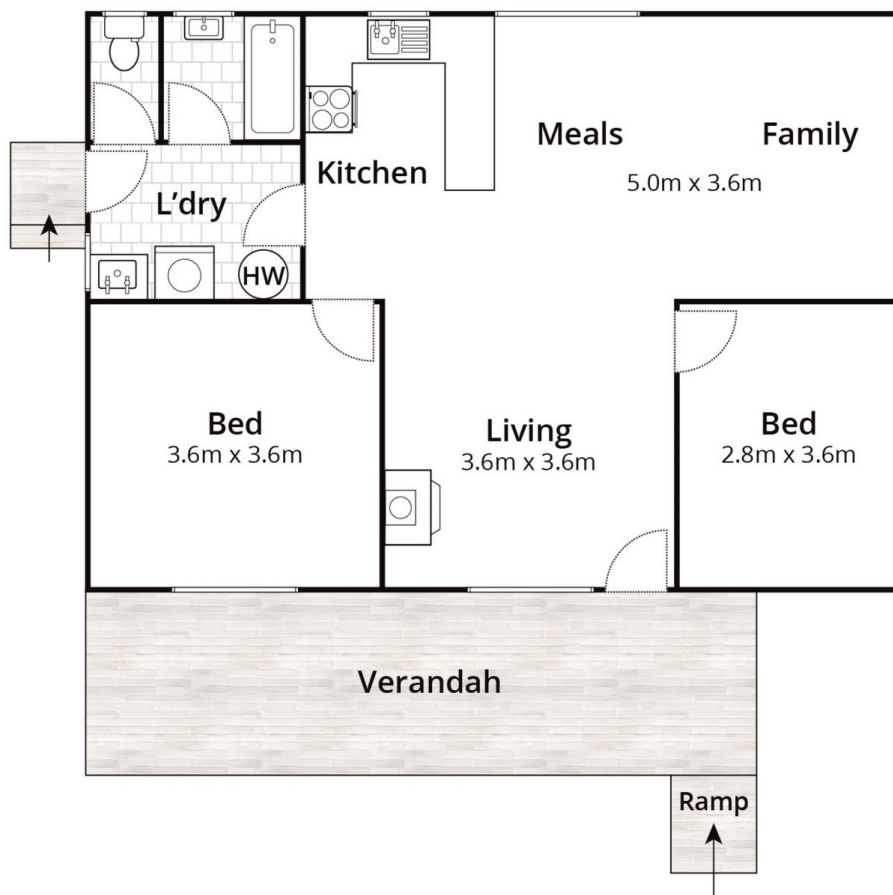
Potential, position, and an opportunity to make it your own! This original home offers the appeal of a central Anglesea position and the prospect of updating when ready. Complemented by a private front verandah that makes the most of the northerly position, the floorplan features 2 generous bedrooms, central bathroom, open and flowing spacious kitchen/living/dining, boasting a truly tranquil treed outlook. Add to this a wood fireplace for those cosy winter nights, a large grassed back yard and work shed. Set on 536sqm (app) and nestled naturally into the low maintenance lush gardens, this location opens the door to an enviable coastal lifestyle within a short stroll to the river, beach, primary school, bike park, shopping, and dining in the Anglesea Village. A brilliant first-home, great family starter or ideal beach house. A perfect entry point into a

Type : House
Land Size : 536 sqm
View : <https://www.greatoceanproperties.com.au/6469415>



Marty Maher
0352200000

[For full version visit the website](https://www.greatoceanproperties.com.au)



Approx. Area 76m²

Whilst bwrn.com.au has made every attempt to ensure the accuracy of the floor plan contained here, measurements are approximate and no responsibility is taken for any error, omission, or mis-statement. This plan is for illustrative purposes only.

63 Camp Road, Anglesea

