



8 Niblick Street ANGLESEA VIC

3 1 2

This is classic Anglesea Beach house living. Character and potential filled with the 1st Fairway in the back garden, this classic family home with leafy charm is privately tucked away in a quiet cul-de-sac.

Elevated and boasting a tranquil outlook, this house is a blank canvas, offering an immediately enjoyable coastal lifestyle with scope to extend or enhance (STCA).

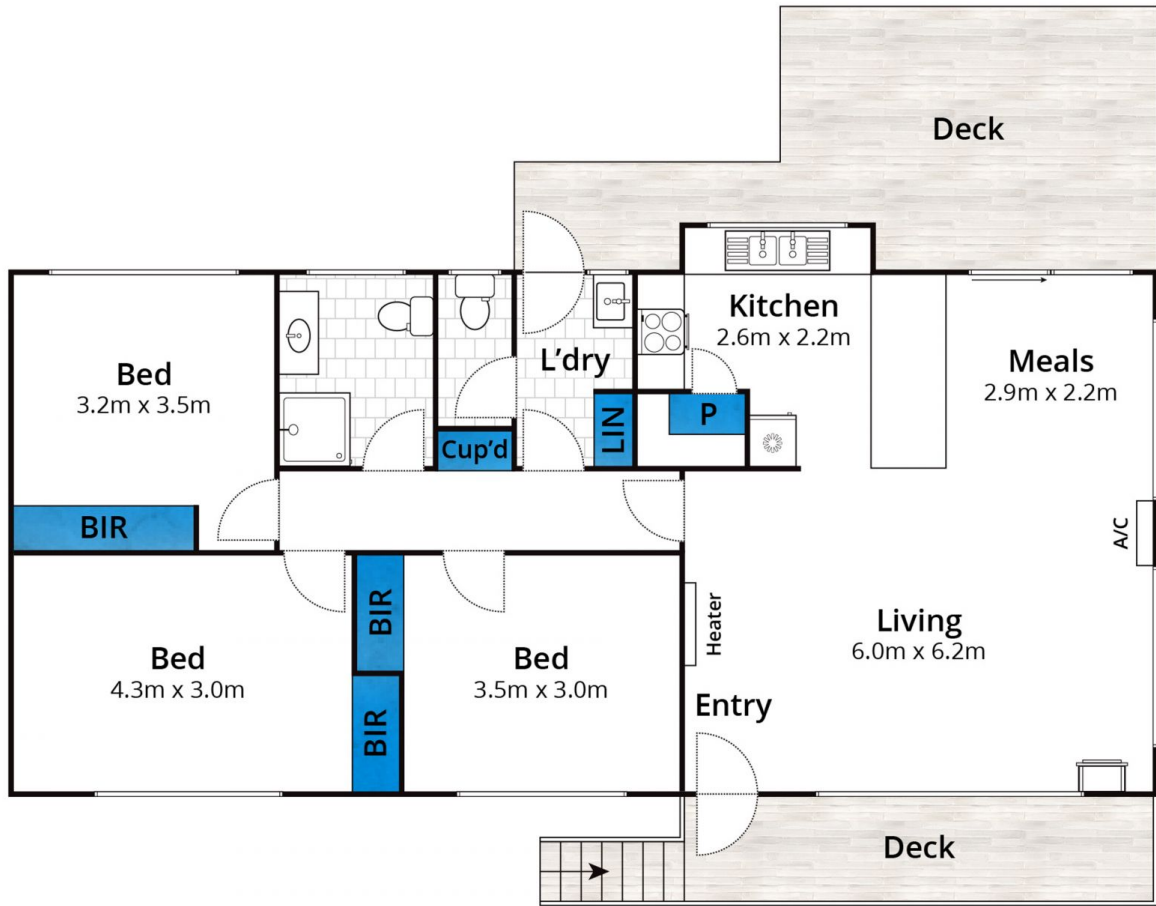
Well-presented interiors, the home offers a practical floorplan comprising three generous bedrooms and central family bathroom accommodation that includes a substantial original kitchen. The central open plan meals & living seamlessly flow to the outdoor entertaining deck oriented to enjoy a northerly aspect ideal for family entertaining. Adding to its appeal is polished timber floorboards, warmed by a cosy wood fireplace & reverse cycle heating and a

Type : House
Land Size : 651 sqm
View : <https://www.greatoceanproperties.com.au/6537720>



Marty Maher
0352200000

[For full version visit the website](https://www.greatoceanproperties.com.au)



Approx. Area 98m²

Whilst bwrn.com.au has made every attempt to ensure the accuracy of the floor plan contained here, measurements are approximate and no responsibility is taken for any error, omission, or mis-statement. This plan is for illustrative purposes only.

8 Niblick Street, Anglesea

