



18 Holmwood Avenue ANGLESEA VIC

3 2 4

This modernist style home is a creative blend of existing 1950s property which has been thoughtfully restored and updated with modern touches. "Rugby?" is a coastal property of special warmth and character in a premier location.

Offering single level simplicity and a flowing floor plan, features here include light filled living and easy access to outdoor entertaining. This is a home for all seasons where winters are spent in cosy proximity to the open fire and summers are for throwing open the French doors and lounging on your choice of outdoor sun filled areas. The contemporary kitchen and separate dining area add ease to entertaining with plentiful work and storage space with seamless flow to the delightful north facing terrace to relish in the morning sun.

Type : House
Land Size : 822 sqm
View : <https://www.greatoceanproperties.com.au/6580293>

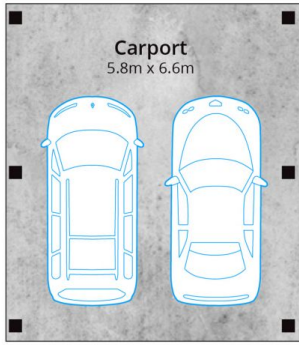


Marty Maher
0352200000

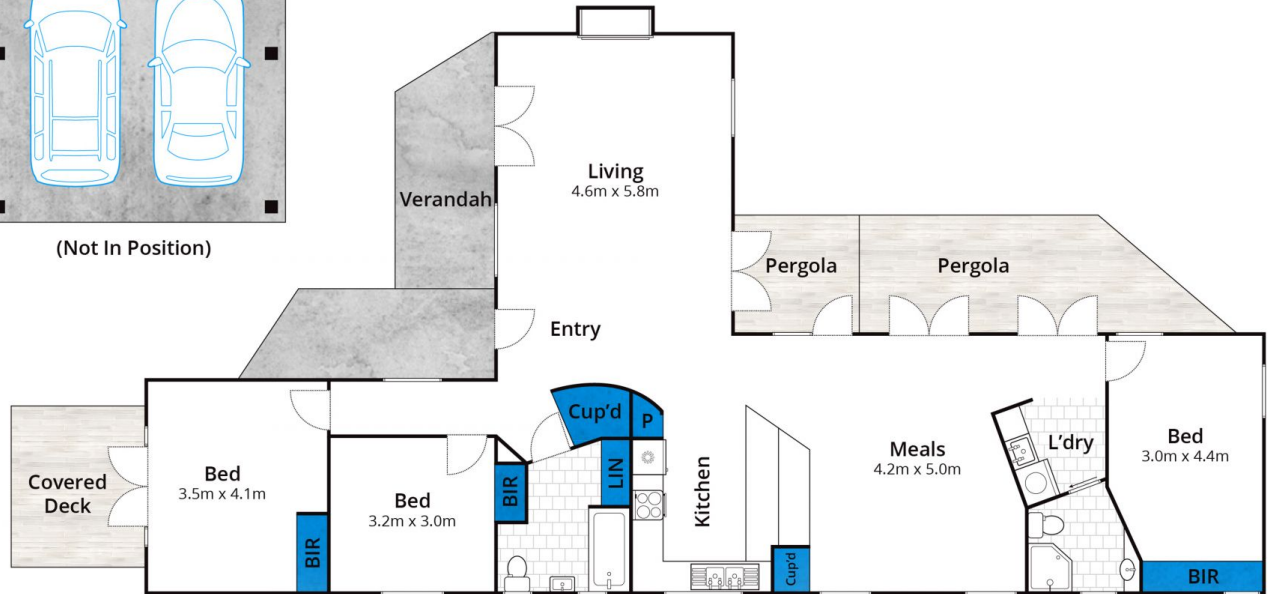
[For full version visit the website](https://www.greatoceanproperties.com.au)

<https://www.greatoceanproperties.com.au>

5220 0000



(Not In Position)



Approx House Area 132m²

Whilst bwrn.com.au has made every attempt to ensure the accuracy of the floor plan contained here, measurements are approximate and no responsibility is taken for any error, omission, or mis-statement. This plan is for illustrative purposes only.

8 Holmwood Avenue, Anglesea

