



8 Wallis Street ANGLESEA VIC

4 2 2

***Inspections are held by private appointment only.

OFFERS REQUIRED BY 27 SEPTEMBER 2021

Architecturally designed, superb quality home custom built for easy care living, completely embraced by its surroundings with spectacular sea views.

Relax, unwind and enjoy the pace of beachside living from one of the Surf Coast's most desirable locations. Spectacular coastal scenery captures stunning north-easterly aspects towards Point Addis and beyond, with bush to beach vantage points. A walkway at the end of the street ensures easy access to Anglesea main beach, surf club and popular cafes.

Set on 587sqm (app) and located in a private & peaceful

Type : House
Land Size : 587 sqm
View : <https://www.greatoceanproperties.com.au/6593829>

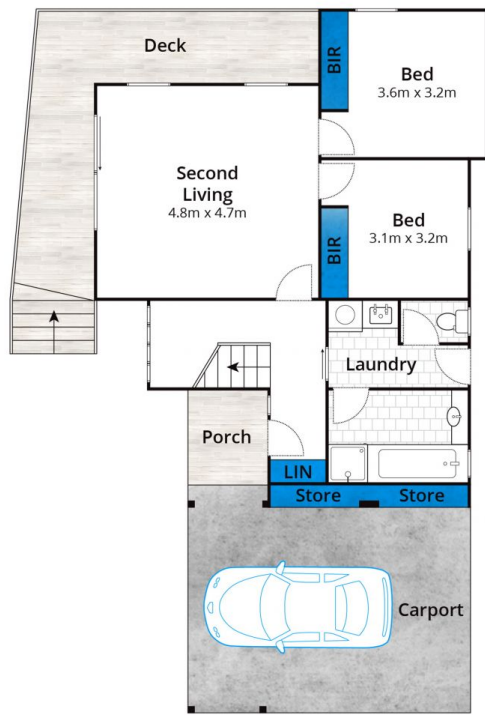


Marty Maher
0352200000

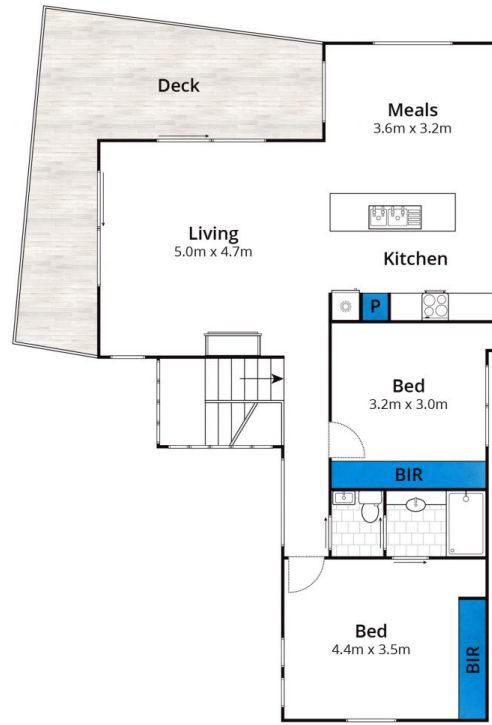
[For full version visit the website](https://www.greatoceanproperties.com.au)

<https://www.greatoceanproperties.com.au>

5220 0000



Ground Floor



First Floor

Approx House Area 156m²

Whilst bwrn.com.au has made every attempt to ensure the accuracy of the floor plan contained here, measurements are approximate and no responsibility is taken for any error, omission, or mis-statement. This plan is for illustrative purposes only.

8 Wallis Street, Anglesea

