



## 66 McMahon Avenue ANGLESEA VIC

4 2 6

With picture perfect elevated bush views that ensure a constant connection to the outdoors, this completely updated coastal retreat offers outstanding comfort and style. Set on a generous 1383sqm (app) amid beautifully presented established gardens across the entire block, there is nothing more to do - just move in and enjoy! Whether a permanent abode or idyllic holiday home, it includes a fully self-contained guest retreat, offering enormous scope for a home business to operate here, excellent holiday rental, Airbnb income potential or extra accommodation when the family come for holidays.

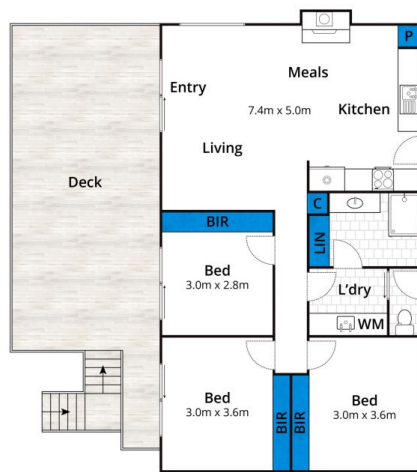
The main residence's north-facing deck features a covered sundrenched outdoor entertaining area, a place to relax, entertain over elevated bush views all year round. These

**Type** : House  
**Land Size** : 1383 sqm  
**View** : <https://www.greatoceanproperties.com.au/6682445>

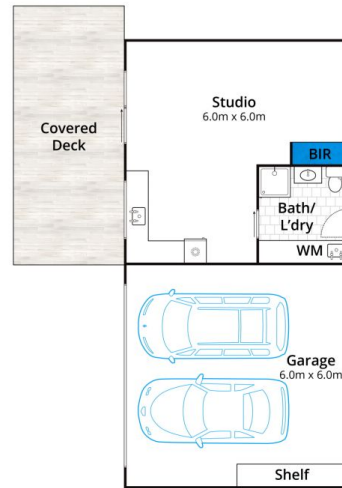


**Marty Maher**  
**0352200000**

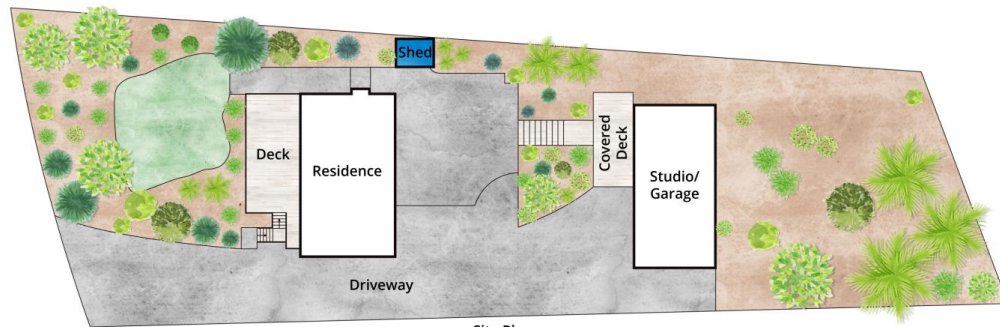
[For full version visit the website](https://www.greatoceanproperties.com.au)



Ground Floor



(Not In Position)



Site Plan

Approx House Area 162m<sup>2</sup>  
Approx Land Size 1384m<sup>2</sup>

Whilst [bwrm.com.au](http://bwrm.com.au) has made every attempt to ensure the accuracy of the floor plan contained here, measurements are approximate and no responsibility is taken for any error, omission, or mis-statement. This plan is for illustrative purposes only.

**66 McMahon Avenue, Anglesea**







Approx House Area 162m<sup>2</sup>

Approx Land Size 1384m<sup>2</sup>

Whilst [bwrn.com.au](http://bwrn.com.au) has made every attempt to ensure the accuracy of the floor plan contained here, measurements are approximate and no responsibility is taken for any error, omission, or mis-statement. This plan is for illustrative purposes only.

## 66 McMahon Avenue, Anglesea

