



#### 42 Harvey Street ANGLESEA VIC

3 3 4

OFFERS REQUIRED BY 22ND NOVEMBER 2021

Family fun is made of this! Think of all the excitement of summers spent hosting family tennis tournaments on the newly resurfaced tennis court, the BBQ sizzling away and the drinks flowing from the custom-built bar, sprawling entertainment space and deck. 1320m2 (approx) at 42 Harvey St offers a rare combination of ocean views, recreation and easy access to the region's best assets.

The elevated position high on the hill rewards you with picture-perfect hinterland bush views to the north, and filtered ocean views to the south. This pinnacle position connects you to the outdoors from large decks and expansive floor to ceiling windows, under soaring vaulted ceilings that extend the sense of space. Brilliant scope for

**Type** : House  
**Land Size** : 1320 sqm  
**View** : <https://www.greatoceanproperties.com.au/6693632>

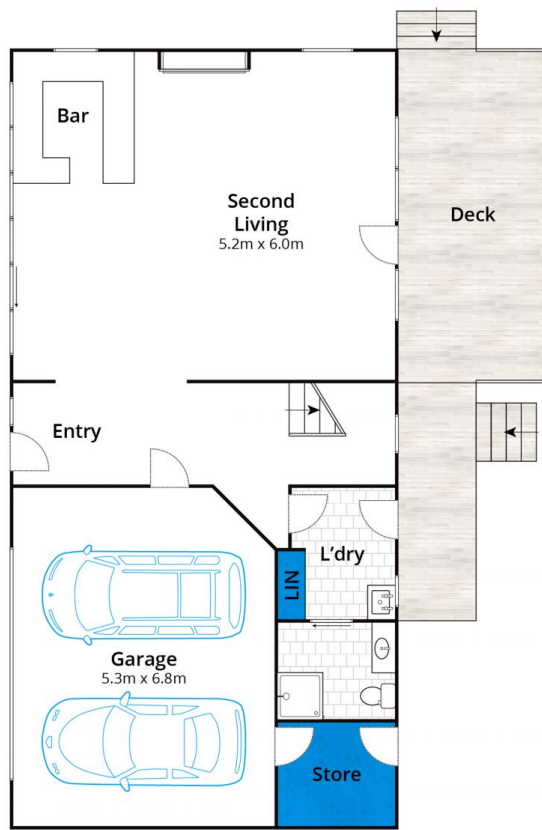


**Marty Maher**  
**0352200000**

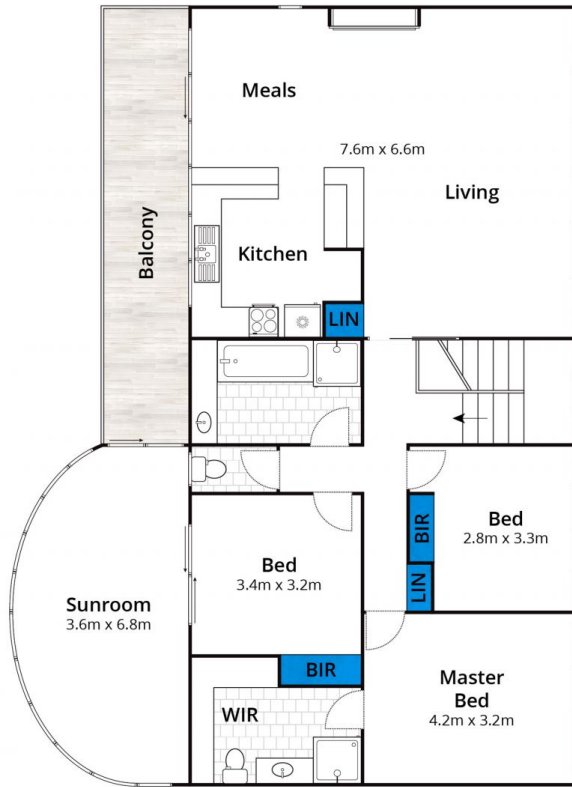
[For full version visit the website](https://www.greatoceanproperties.com.au)

<https://www.greatoceanproperties.com.au>

5220 0000



Ground Level



Upper Level

Whilst [bwrn.com.au](http://bwrn.com.au) has made every attempt to ensure the accuracy of the floor plan contained here, measurements are approximate and no responsibility is taken for any error, omission, or mis-statement. This plan is for illustrative purposes only.

**42 Harvey Street, Anglesea**

**greatoceanproperties**