



38 Beal Street BIRREGURRA VIC

3 1 2

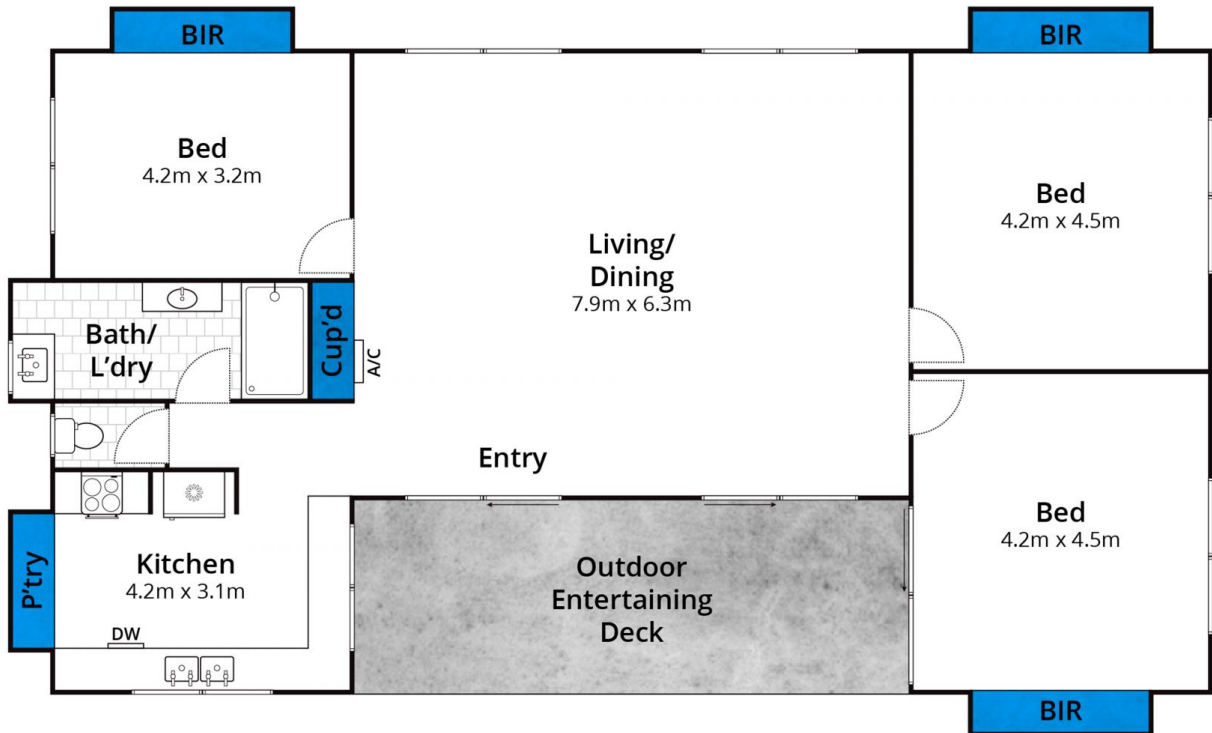
This contemporary country home exudes class and quality providing family comfort with an idyllic lifestyle. This clever design, lofty ceilings and thoughtful placement of exterior doors and windows creates a wonderful sense of space with seamless indoor/outdoor living. Boasting 3 bedrooms, they are all are generous in size. The home features a light-filled, modern open plan living and dining that opens out to a gorgeous, sunny north-facing entertaining area and yard with views of the Birregurra reserve. Easy walking distance to the Main St and only minutes away from the renown Brae Restaurant, wineries, breweries and food producers. This superb home is set on a 1036sqm allotment approx. Enjoy the perfect tree change with Lorne and Aireys Inlet 35 mins away and Geelong only a 45-minute drive away. This is an ideal property for an ideal

Type : House
Price : \$ 675,000
Land Size : 1036 sqm
View : <https://www.greatoceanproperties.com.au/6704515>



Marty Maher
0352200000

[For full version visit the website](https://www.greatoceanproperties.com.au)



Approx House Area 135m²

Whilst bwrn.com.au has made every attempt to ensure the accuracy of the floor plan contained here, measurements are approximate and no responsibility is taken for any error, omission, or mis-statement. This plan is for illustrative purposes only.

38 Beal Street, Birregurra

