



45 Fifth Avenue ANGLESEA VIC

4 2 2

Occupying an outstanding corner position at the juncture of Fourth and Fifth Ave, this crossroad position delivers on all the elements we love about Anglesea beach house living. Every aspect presents inspiring bush views, with the palpable sense of peace that only a generous treed setting can achieve. Orientated with its back to the south, the home seemingly opens itself up to the east, west and northern sunshine via the clever layout and intuitive decks. Days will be measured by sunrise cuppas on the east deck, through to afternoons entertaining on the great upper or lower north decks. Set amongst a canopy of gum trees, you can almost reach out and touch the leaves.

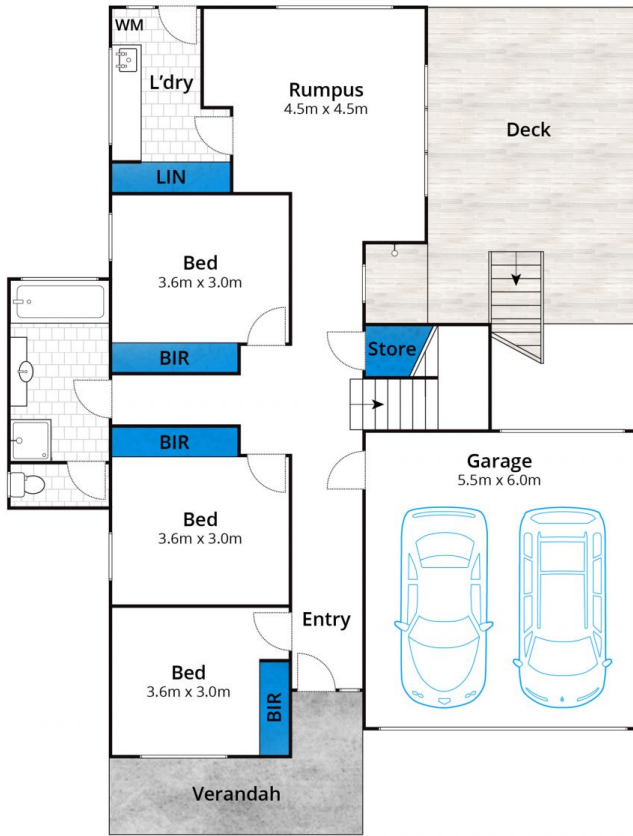
Offering impressive comfort and style, this impeccably

[For full version visit the website](https://www.greateoceanproperties.com.au/6728755)

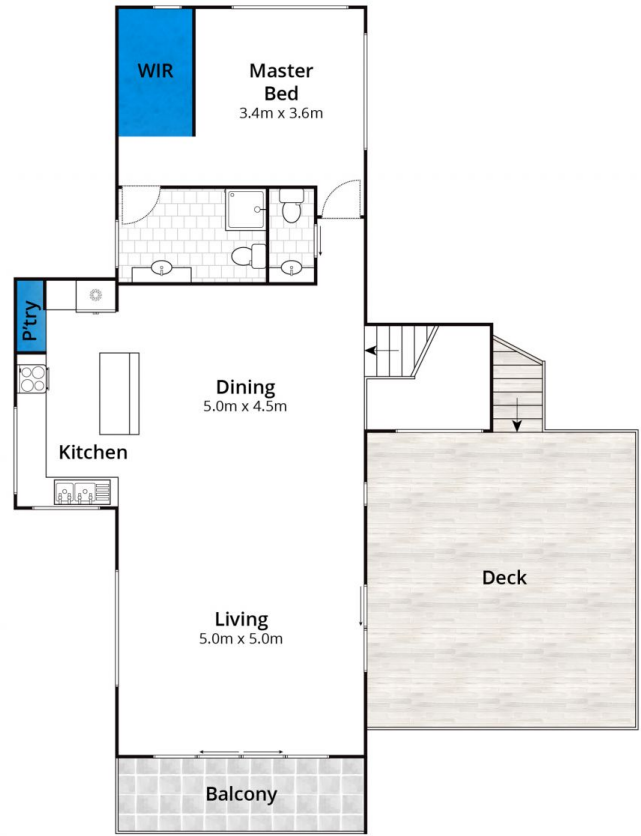
Type : House
Land Size : 1264 sqm
View : <https://www.greateoceanproperties.com.au/6728755>



Marty Maher
0352200000



Ground Floor



First Floor

Approx. Area 231m²

Whilst bwrn.com.au has made every attempt to ensure the accuracy of the floor plan contained here, measurements are approximate and no responsibility is taken for any error, omission, or mis-statement. This plan is for illustrative purposes only.

45 Fifth Avenue, Anglesea

