



31 She Oak Crescent FAIRHAVEN VIC

4 🏠 2 🚗 2 🚗

Facing north in an elevated position overlooking the Great Otway National Park, this well-presented beach house provides a stunning view plus total privacy. Set on a substantial 1018sqm (app) native allotment, the residence has the ingredients that an ideal beach house should have. Ample accommodation for the extended family in four bedrooms, including a large bunk room that teenagers would love, plus a large light filled living area opening onto a sundeck, a second living area downstairs also opening onto a deck, and a bathroom on each level, make this a very practical coastal residence. The large sundeck on the upper level is a genuine highlight and you cannot help but marvel at the outlook every time you walk out there. The elevation even provides ocean glimpses that on a clear day extend all the way to Arthurs Seat in Dromana. Access to

Type : House
Price : \$ 1,870,000
Land Size : 1018 sqm
View : <https://www.greatoceanproperties.com.au/6737990>

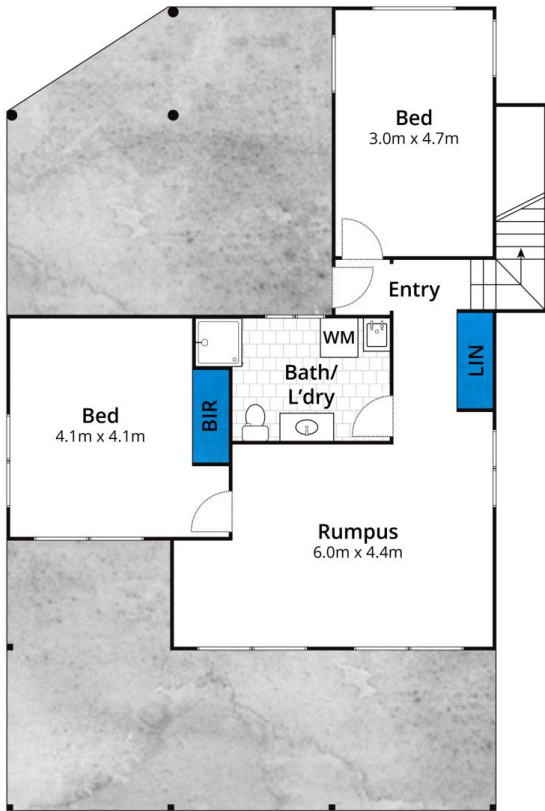


Marty Maher
0352200000

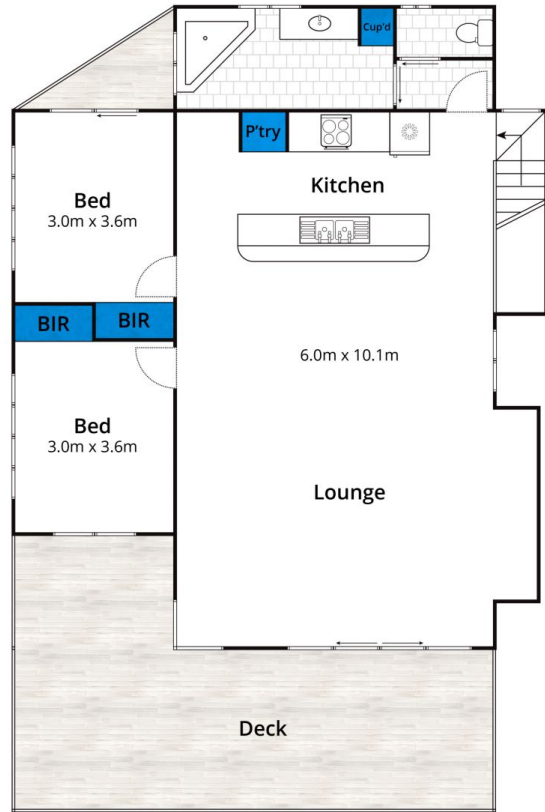


Mim Atkinson
0352200000

[For full version visit the website](https://www.greatoceanproperties.com.au)



Ground Floor



First Floor

Approx. Area 180m²

Whilst bwrm.com.au has made every attempt to ensure the accuracy of the floor plan contained here, measurements are approximate and no responsibility is taken for any error, omission, or mis-statement. This plan is for illustrative purposes only.

31 She Oak Crescent, Fairhaven

