



## 29 Chatswood Drive ANGLESEA VIC

4 3 2

Your vision of blending modern living with bush views and a semi-sustainable lifestyle is no longer a dream. Intuitively planned to maximise its elevated position and harmonize with its surrounds, this energy-efficient builder's own home offers the pinnacle of excellence. Designed to elevate everyday life, the living and entertaining spaces celebrate the picturesque bush outlooks and sunsets from what could best be described as an amphitheatre-style setting.

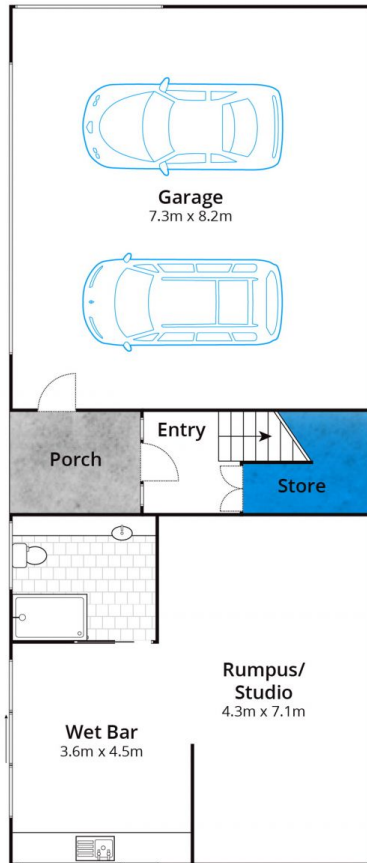
Stretching across the wide frontage to the utmost advantage, the elevated home has a wide-angle lens to some of the region's best natural attributes. Gaze out to the south and watch the weather come in across endless bush. The sense of freedom felt from being in tune with your natural surrounds and its seasonal changes is an

**Type** : House  
**Land Size** : 736 sqm  
**View** : <https://www.greatoceanproperties.com.au/6739061>

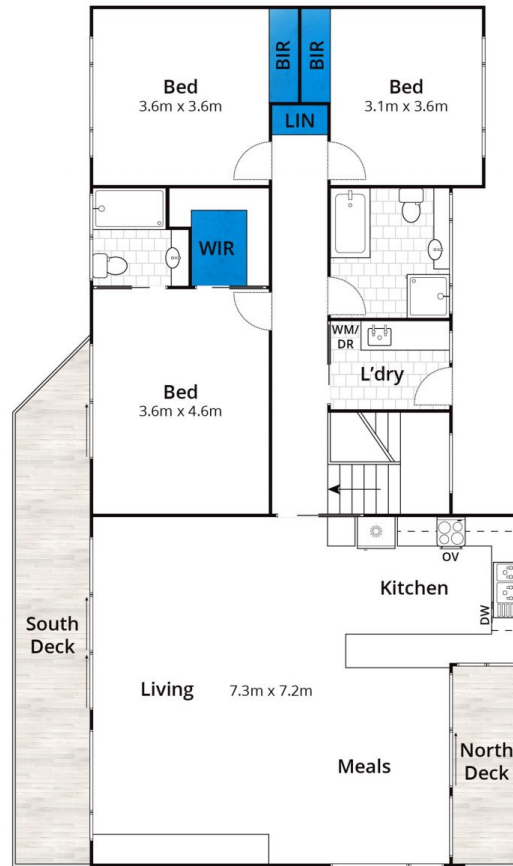


**Marty Maher**  
**0352200000**

[For full version visit the website](https://www.greatoceanproperties.com.au)



Ground Floor



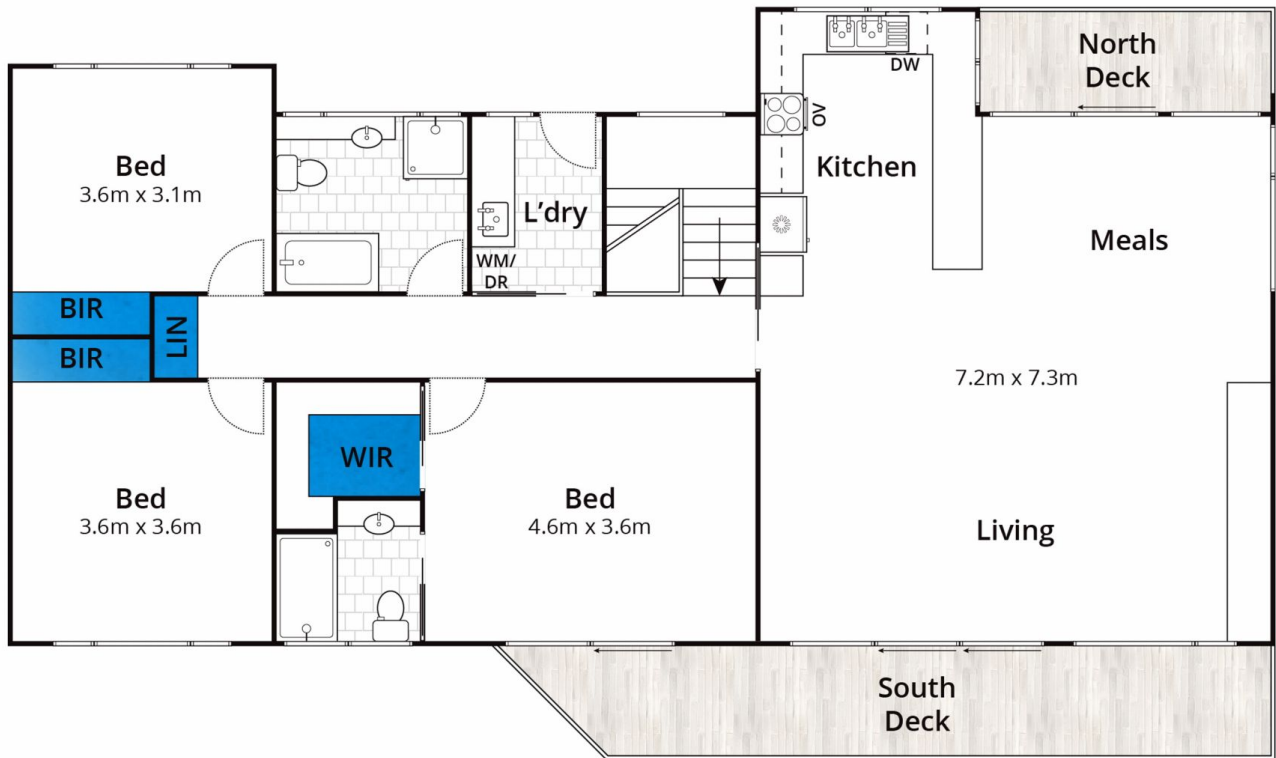
First Floor

Approx House Area 261m<sup>2</sup>

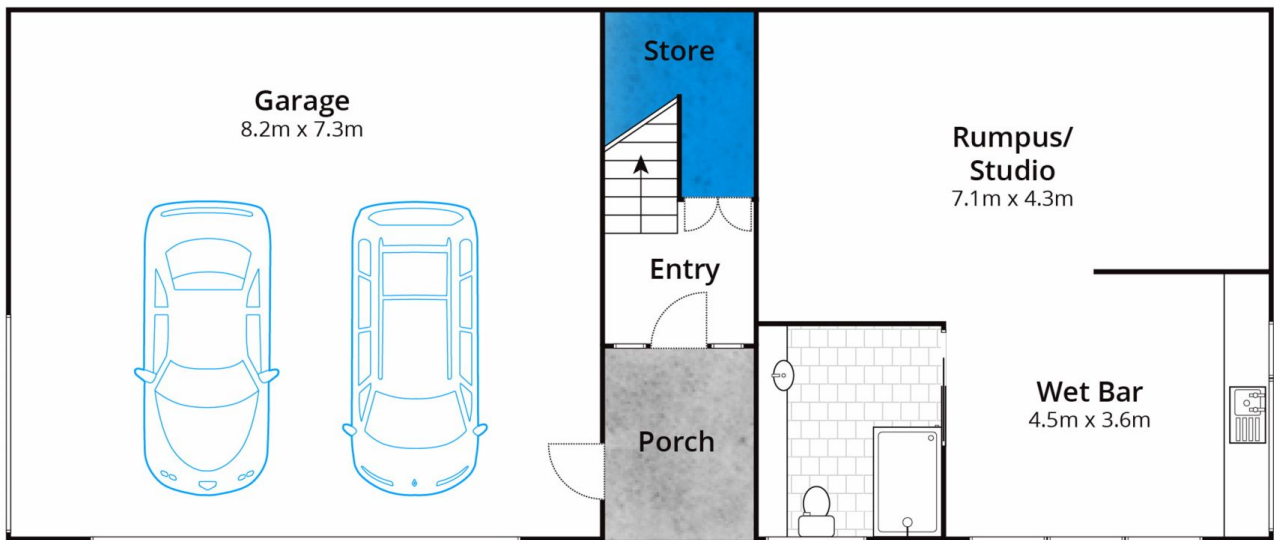
Whilst [bwrn.com.au](http://bwrn.com.au) has made every attempt to ensure the accuracy of the floor plan contained here, measurements are approximate and no responsibility is taken for any error, omission, or mis-statement. This plan is for illustrative purposes only.

**29 Chatswood Drive, Anglesea**





First Floor



Ground Floor