



13 Eagle Avenue ANGLESEA VIC

3 1 2

Charming and character filled "Cockatoo Cottage" is quietly tucked away toward the end of a peaceful cul-de-sac and boasting a truly tranquil outlook is this classic Anglessea family home. This home, with leafy charm, offers an immediate enjoyable coastal lifestyle with the golf course only a short stroll away.

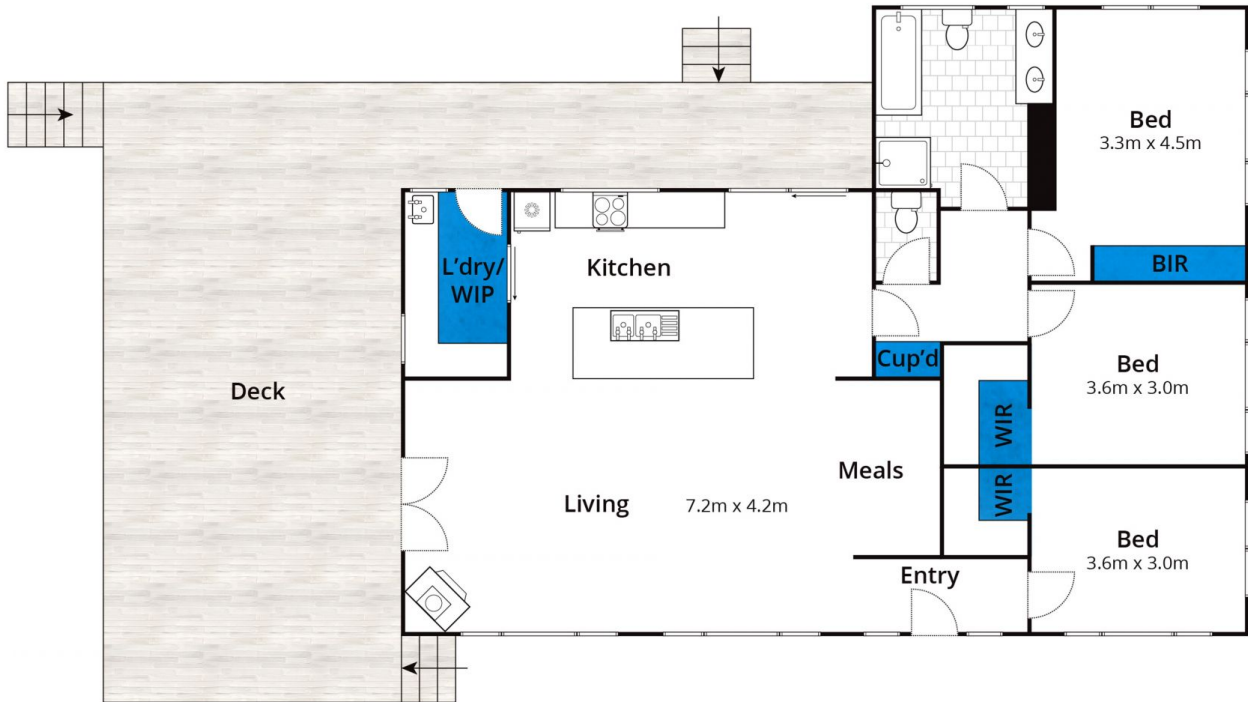
Well-presented interiors with recent upgrades, complete with a practical flowing floorplan comprising: three generous bedrooms (2 BDR with WIR, the master with built-ins) and central bathroom accommodation that includes a substantial well-appointed kitchen. The smartly designed open plan layout with indoor/outdoor entertainment flow to the north facing sundrenched deck provides that perfect place to relax & unwind. The spacious interiors evoke the very essence of relaxed coastal living

Type : House
Land Size : 911 sqm
View : <https://www.greatoceanproperties.com.au/6766718>



Marty Maher
0352200000

[For full version visit the website](https://www.greatoceanproperties.com.au)



Approx House Area 123m²

Whilst bwrn.com.au has made every attempt to ensure the accuracy of the floor plan contained here, measurements are approximate and no responsibility is taken for any error, omission, or mis-statement. This plan is for illustrative purposes only.

13 Eagle Avenue, Anglesea

