



20 Yandanah Road FAIRHAVEN VIC

4 3 6

This substantial four bedroom tri-level residence provides so many sought after features it will not fail to impress even the most discerning buyers. The 180 degree outlook is incredible, taking full advantage of its elevated position. You can watch the waves hit the sand on Fairhaven beach while taking in the Split Point Lighthouse in Aireys Inlet in one direction and Lorne in the other. The Mount Gambier limestone construction is superbly detailed and most importantly very low maintenance. The master suite on the upper level is truly opulent and captures the superb outlook from the comfort of your bed. There is also a home office area on this level. The remaining three bedrooms are all substantial and each directly serviced by a bathroom. The middle level with its open plan living area opening onto an enormous sundeck provides a substantial indoor/outdoor

Type : House
Price : \$4,000,000 - \$4,400,000
Land Size : 1445 sqm
View : <https://www.greatoceanproperties.com.au/6819199>



Marty Maher
0352200000

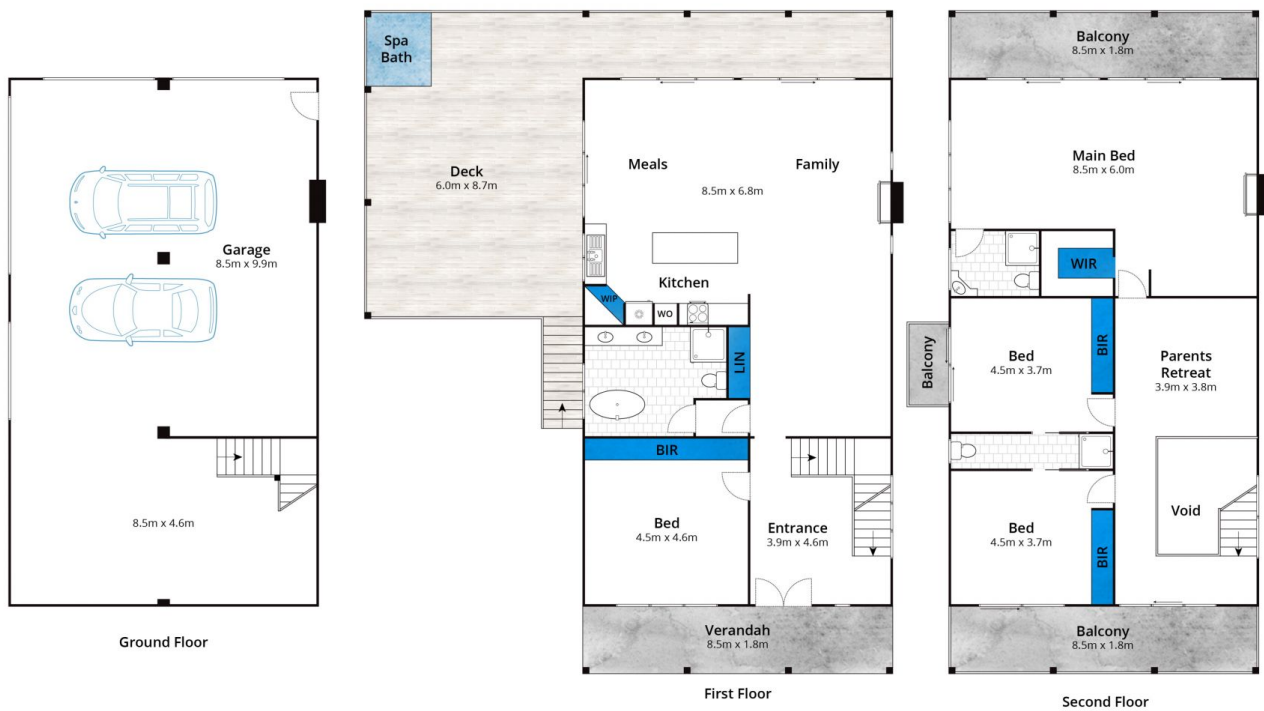


Mim Atkinson
0352200000

[For full version visit the website](https://www.greatoceanproperties.com.au)

<https://www.greatoceanproperties.com.au>

5220 0000



Approx House Area 375m²

Whilst bwrm.com.au has made every attempt to ensure the accuracy of the floor plan contained here, measurements are approximate and no responsibility is taken for any error, omission, or mis-statement. This plan is for illustrative purposes only.

20 Yandanah Road, Fairhaven

