



**2710 Great Ocean Road HORDERN VALE VIC**

6 4 7

A rare opportunity to purchase Aire River Farm in the tightly held Glenaire Valley. This unique Great Ocean Road property has two excellent dwellings set on 46 acres of easy to maintain farmland and boasts 1200 metres of Aire River frontage.

**Type** : House  
**Land Size** : 46 Acres  
**View** : <https://www.greatoceanproperties.com.au/6851413>

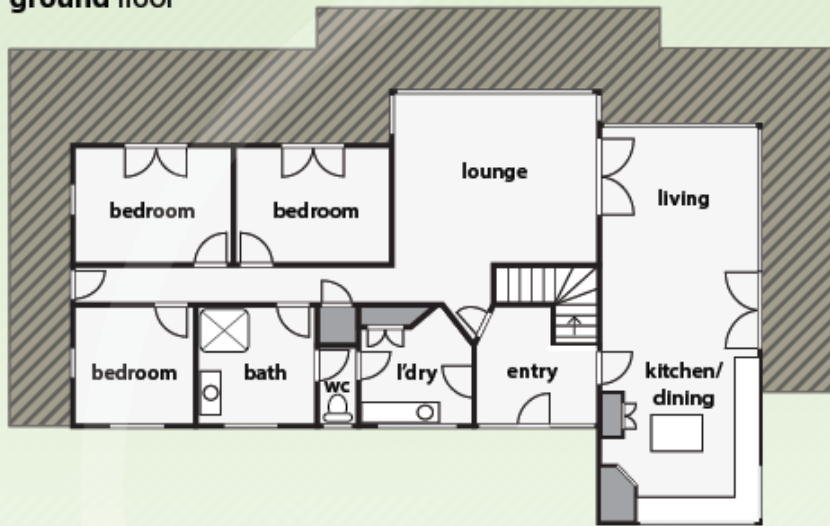
The main dwelling is a striking 5-bedroom, 3-bathroom home, designed and built by renowned local builder Peter Deppeler as the family home and has been meticulously maintained. The house sits elevated above the Aire River with spectacular views of the valley, bush and lush farmland. Ample windows designed to capture the sun and maximize the views. Large French doors open onto an expansive veranda that wraps 3 sides of the house. The home has a local hardwood frame, messmate floors, cedar



**Gary Van Someren**  
**0418550049**

[For full version visit the website](https://www.greatoceanproperties.com.au)

**ground floor**



**first floor**



**cabin**

**spa**

**deck**

**bedroom**

**living**

**ensuite**

**sauna**

**l'dry**

**entry**

**carport**

**WC**

