



## 25 Chatswood Drive ANGLESEA VIC

3 2 4

This is the ideal Anglesea beach house. While being central, the house is also quiet and private with that relaxed holiday feel. This very smart and immaculate two storey 3-bedroom home with its generous use of space makes this impressive low maintenance home ideal for the family or as an excellent coastal investment. The only thing left to do is move in.

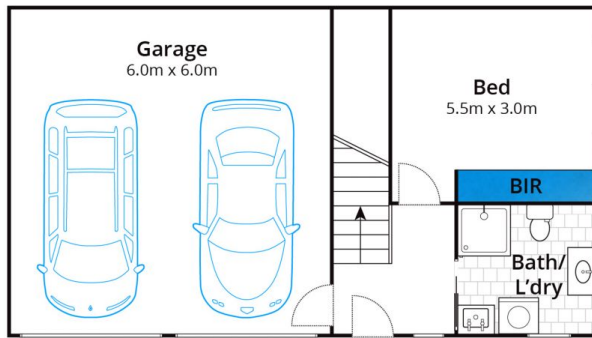
The home is set amongst a tranquil garden with a rear sun-drenched deck allowing that holiday feel of privacy from the real world. The well thought out home consists of an open dining and living area with a natural flow to the outdoors with sliding doors opening onto the outdoor entertaining area where your living zone is increased. The generous main bedroom is designed with its treed outlook and built-in robes. Upstairs there is another large

**Type** : House  
**Land Size** : 673 sqm  
**View** : <https://www.greatoceanproperties.com.au/6883584>

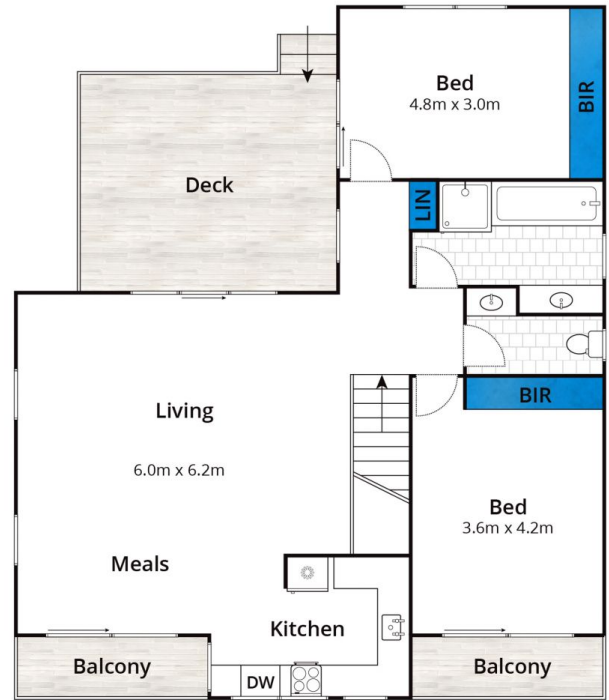


**Marty Maher**  
**0352200000**

[For full version visit the website](https://www.greatoceanproperties.com.au)



Ground Floor



Upper Floor

Whilst [bwrm.com.au](http://bwrm.com.au) has made every attempt to ensure the accuracy of the floor plan contained here, measurements are approximate and no responsibility is taken for any error, omission, or mis-statement. This plan is for illustrative purposes only.

## 25 Chatswood Drive, Anglesea

