



1340 Horseshoe Bend Road TORQUAY VIC

3 **2** **2**

With Whites Beach, picnic and playground areas only a few minutes stroll away, this double level family home is sure to meet your beach escape dreams. Situated on a large 650 sqm app. level allotment and with ocean views from the upper wrap around balcony, this home delights. Together with its wood fire heater to cosy up by on those cool winter evenings, in addition to the inground pool and spa entertainers' area for those fun filled summer days, the property offers a large open plan living, kitchen and dining area complete with bar to the upper-level area. Whilst downstairs you'll find three bedrooms, each with built in robes and ensuite to master plus second sun filled living room with an additional wood heater. Features include timber floors, high ceilings and large double garage with separate workshop.

[For full version visit the website](https://www.greatoceanproperties.com.au/6908250)

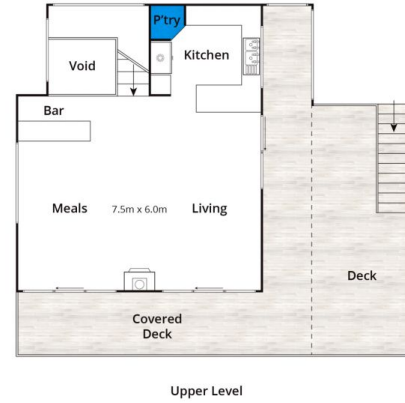
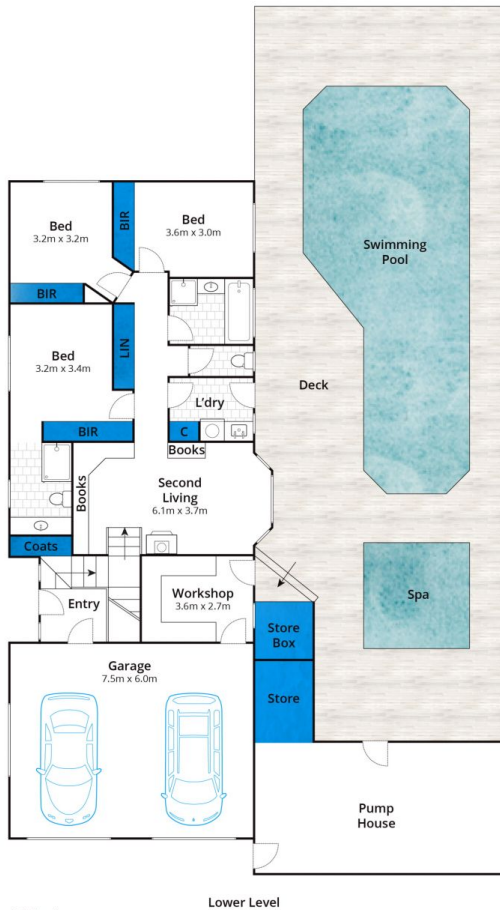
Type : House
Price : \$ 1,600,000
Land Size : 650 sqm
View : <https://www.greatoceanproperties.com.au/6908250>



Marty Maher
0352200000



Michelle McDonald
0352631100



Approx House Area 216m²

Whilst bwrm.com.au has made every attempt to ensure the accuracy of the floor plan contained here, measurements are approximate and no responsibility is taken for any error, omission, or mis-statement. This plan is for illustrative purposes only.

1340 Horseshoe Bend Road, Torquay

