



33 Odonohue Road ANGLESEA VIC

3 2 4

A beach house escape that conjures all the classic coastal ideals of nature, sun, surf, sand. Set in an elevated position on a 586m2 (approx) landscaped block, this home proudly takes its position across the road from the Great Otway National Park, a stone's throw from the Great Ocean Road. Walking distance to one of the world's most iconic stretches of coast, you can see the ocean from your driveway and will be on the sand at O'Donohue's Beach within a short walk.

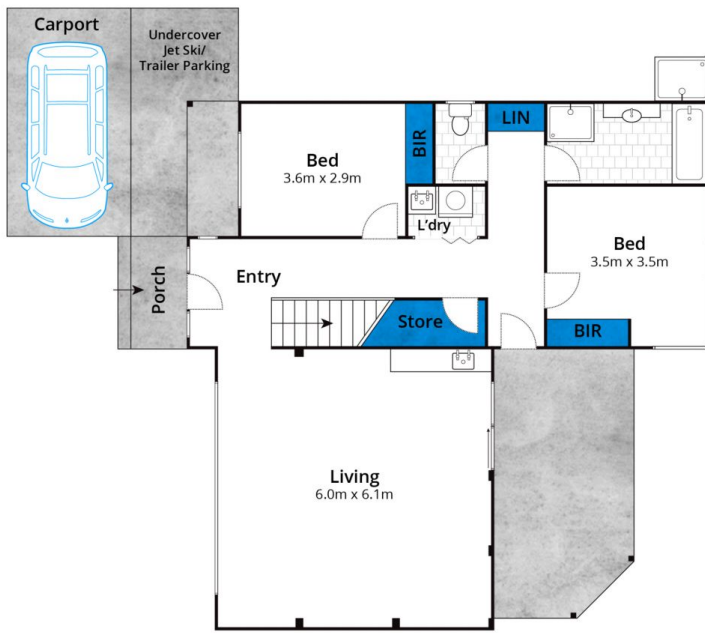
Designed to harness incredible ocean views to the iconic rocky outcrop of Point Roadknight, the sweeping aspect takes in 180' views of the ocean, breaking waves and stunning treetops. Your days will be measured by the

[For full version visit the website](https://www.greateoceanproperties.com.au/6955768)

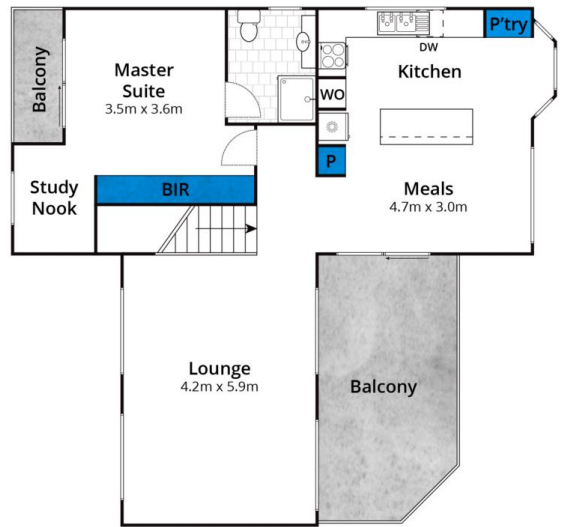
Type : House
Land Size : 586 sqm
View : <https://www.greateoceanproperties.com.au/6955768>



Marty Maher
0352200000



Ground Floor



First Floor

Approx. Area 180m²

Whilst bwrn.com.au has made every attempt to ensure the accuracy of the floor plan contained here, measurements are approximate and no responsibility is taken for any error, omission, or mis-statement. This plan is for illustrative purposes only.

33 Odonohue Road, Anglesea

