



## 16 Suffolk Drive BELLBRAE VIC

5 3 3

Offers required by 5 July 2022

Perfectly situated on an elevated block in the exclusive Grossman's Ridge Estate, this remarkable master-built home personifies coast-meets-country living. The north-facing home, set on 1 acre (approx.), has breathtaking panoramic views of the rural landscape over Freshwater Creek, Mount Moriac, the You Yangs, and the lights of Geelong. Imagine watching the sunrise every morning, or a beautiful sunset in the evening, with nothing but paddocks in the distance. The property backs onto neighbouring farmland so you will have all the space and outlook of a country lifestyle, but without the upkeep.

The layout embraces the entire northern aspect and

**Type** : House  
**Land Size** : 1 Acres  
**View** : <https://www.greatoceanproperties.com.au/7036099>

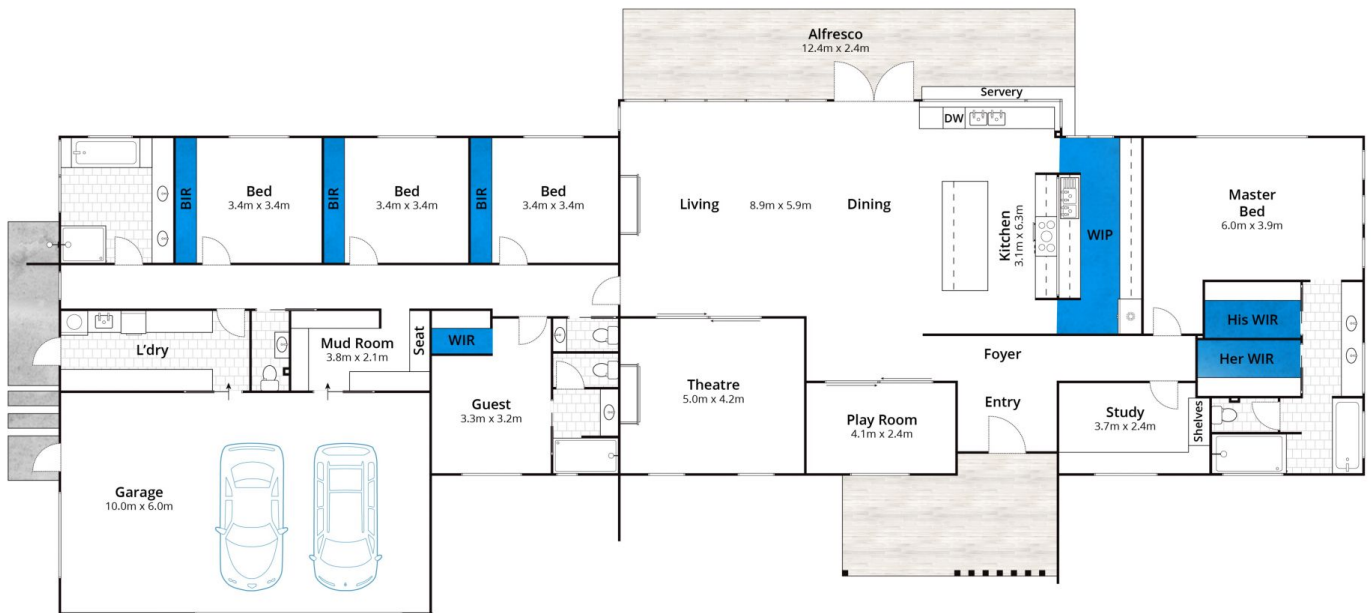


**Marty Maher**  
0352200000



**Michelle McDonald**  
0352631100

[For full version visit the website](https://www.greatoceanproperties.com.au)



Whilst [bwrm.com.au](http://bwrm.com.au) has made every attempt to ensure the accuracy of the floor plan contained here, measurements are approximate and no responsibility is taken for any error, omission, or mis-statement. This plan is for illustrative purposes only.

## 16 Suffolk Drive, Bellbrae

