



33 Manna Gum Drive TORQUAY VIC

4 3 2

NEW PRICE

Tucked away in the peaceful Ocean Views Estate, this impressive property harnesses sea views from Jan Juc to the Rip and Point Nepean. Immaculately presented throughout, and only used by one family for holidays, the second storey was added more recently to capitalise on the views. Designed for easy living, the extensive floorplan is big enough to accommodate full-time family life, or downsizers who love to welcome guests for the holidays. The ground floor comprises 2 separate living zones, with room for everyone to relax and entertain. Ducted gas heating and evaporative cooling provide climate comfort in any season. The spacious open plan family zone incorporates a central kitchen with updated benchtops and a dining area that leads to a covered outdoor alfresco,

Type : House
Land Size : 674 sqm
View : <https://www.greatoceanproperties.com.au/7036107>

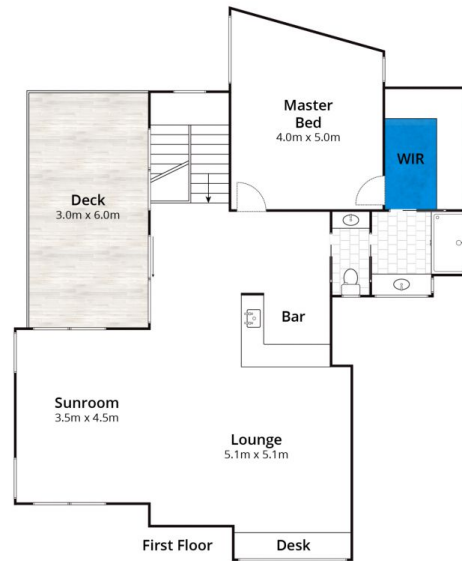
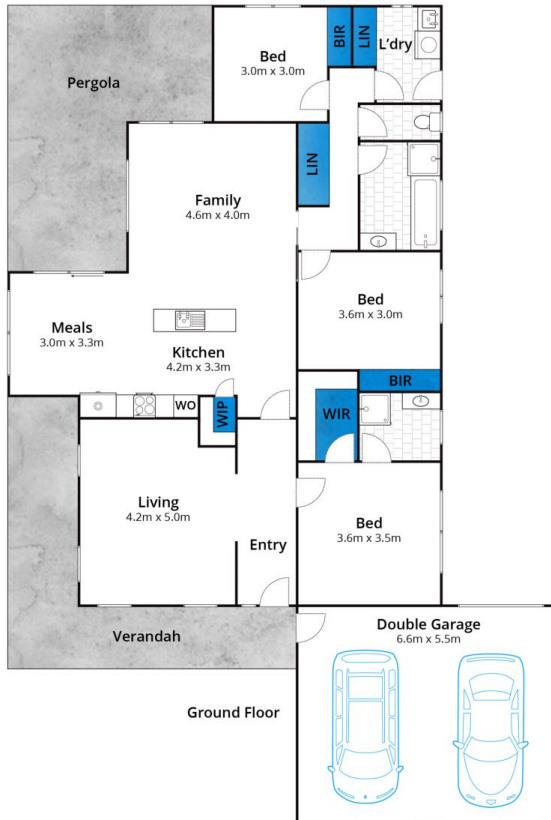


Marty Maher
0352200000



Michelle McDonald
0352631100

[For full version visit the website](https://www.greatoceanproperties.com.au)



Whilst bwrn.com.au has made every attempt to ensure the accuracy of the floor plan contained here, measurements are approximate and no responsibility is taken for any error, omission, or mis-statement. This plan is for illustrative purposes only.

33 Manna Gum Drive, Torquay

