



5 Loretas Way ANGLESEA VIC

3 3 2

OFFERS REQUIRED BY 12TH JULY 2022  
INSPECTION BY APPOINTMENT

Impeccably presented in a style that expresses timeless coastal appeal throughout, there is nothing more to do but unpack your bags and begin your riverside life. This privately positioned double-storey home is set in a convenient 'walk to everything' location with the walking trail only footsteps from your doorstep.

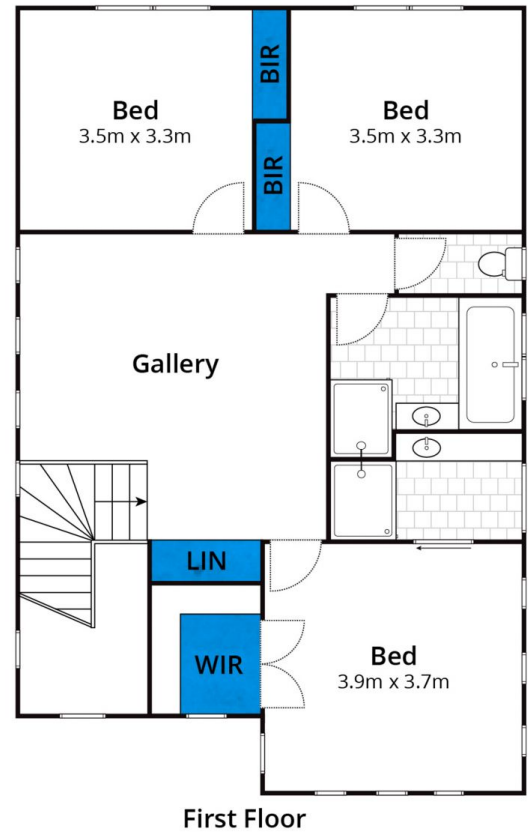
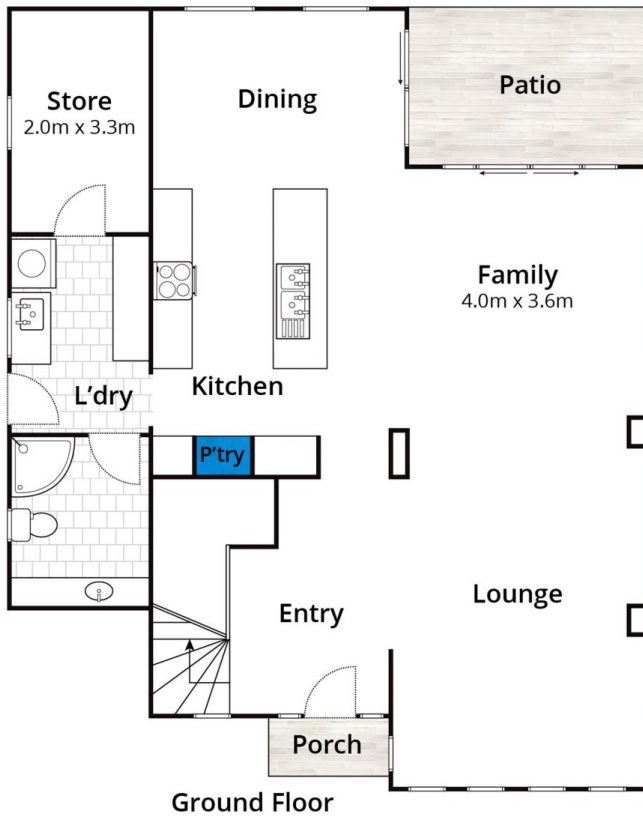
Occupying its own title on 322sqm (app), this is the epitome of seaside comfort, space and style. Set against a backdrop of superb bushland, the seamless connection to the outdoors draws you onto the large deck for entertaining

[For full version visit the website](https://www.greateoceanproperties.com.au/7042031)

**Type** : House  
**Land Size** : 322 sqm  
**View** : <https://www.greateoceanproperties.com.au/7042031>



**Marty Maher**  
0352200000



Whilst [bwrm.com.au](http://bwrm.com.au) has made every attempt to ensure the accuracy of the floor plan contained here, measurements are approximate and no responsibility is taken for any error, omission, or mis-statement. This plan is for illustrative purposes only.

## 5 Loretta Way Anglesea

