



### 3/20-22 Surf Coast Highway TORQUAY VIC

3 2 2

Ideal for families, downsizers or those seeking a holiday home in a fabulous location, this townhouse delivers relaxed living, just moments from the best of Torquay. Low maintenance and centrally positioned in the heart of old Torquay, this well-maintained residence enjoys an unrestricted front row position that maximises its westerly orientation; think kaleidoscopic sunsets, ocean views, golf course and Spring Creek aspects.

The elevated, light-filled living and large family dining area harness the views, opening onto an extensive entertainer's deck. Perfectly framed views of Torquay Point, RACV Golf Course and the sports oval are also a highlight from the kitchen, making meal prep in this well-appointed space a pleasure. A convenient guest powder room is also located

**Type** : Townhouse  
**Land Size** : 310 sqm  
**View** : <https://www.greatoceanproperties.com.au/7076123>



**Marty Maher**  
0352200000

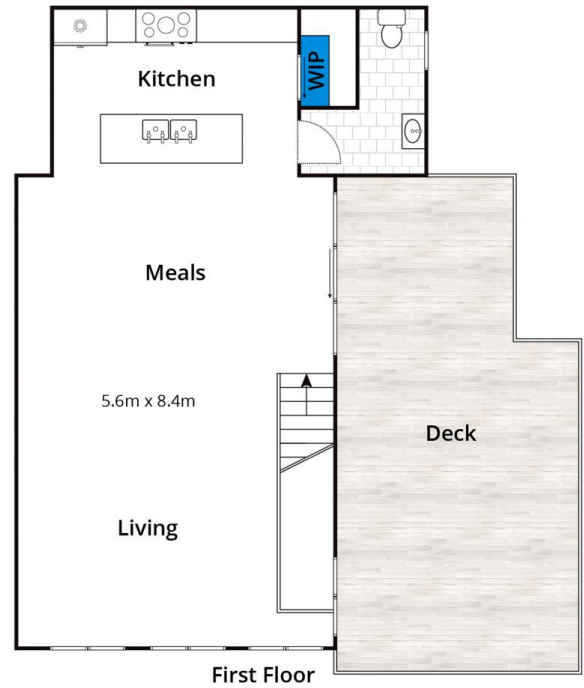
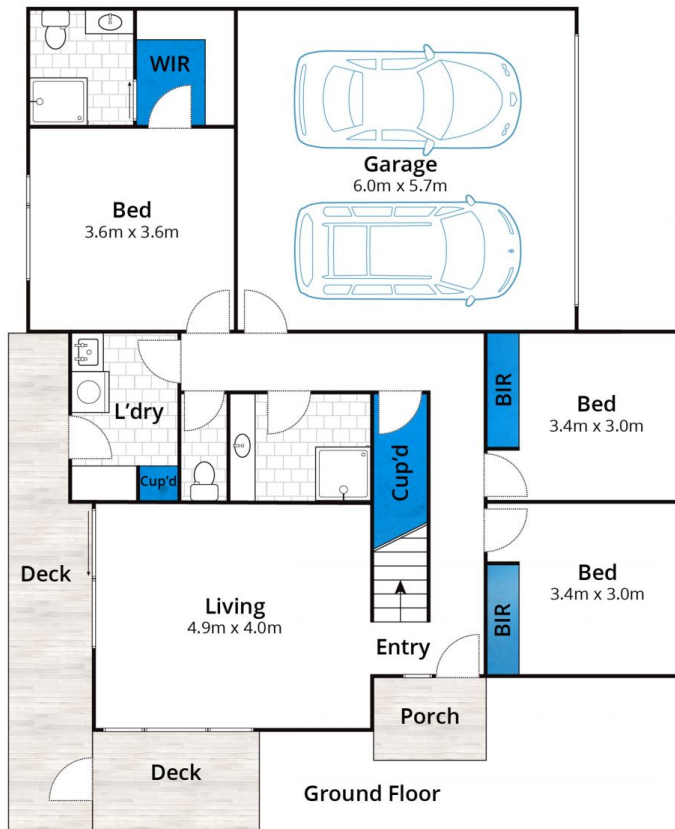


**Michelle McDonald**  
0352631100

[For full version visit the website](https://www.greatoceanproperties.com.au)

<https://www.greatoceanproperties.com.au>

5220 0000



Whilst [bwrn.com.au](http://bwrn.com.au) has made every attempt to ensure the accuracy of the floor plan contained here, measurements are approximate and no responsibility is taken for any error, omission, or mis-statement. This plan is for illustrative purposes only.

**3/20-22 Surfcoast Highway, Torquay**

