



### 14 Murray Street ANGLESEA VIC

3 2 2

Auction 8 October 2022 at 12pm

Set in the tightly held and highly sought after beach end of Murray Street, this solid but older 3BR brick home is ideal for those wishing to renovate to suit their own needs while securing an outstanding position. Set on an 809sqm (app) corner allotment and with the long side of the allotment facing north, the residence is set back so that the garden area is a very usable space. With beautification, this garden could be very special. With the land being relatively level and the residence being single level, it would suit all ages and it could be ideal for those looking to move to Anglesea either on a permanent or part time basis. There is a large double garage and easy access off Parker Street which is the advantage of a corner allotment in that your

**Type** : House  
**Land Size** : 809 sqm  
**View** : <https://www.greatoceanproperties.com.au/7185921>



**Marty Maher**  
**0352200000**

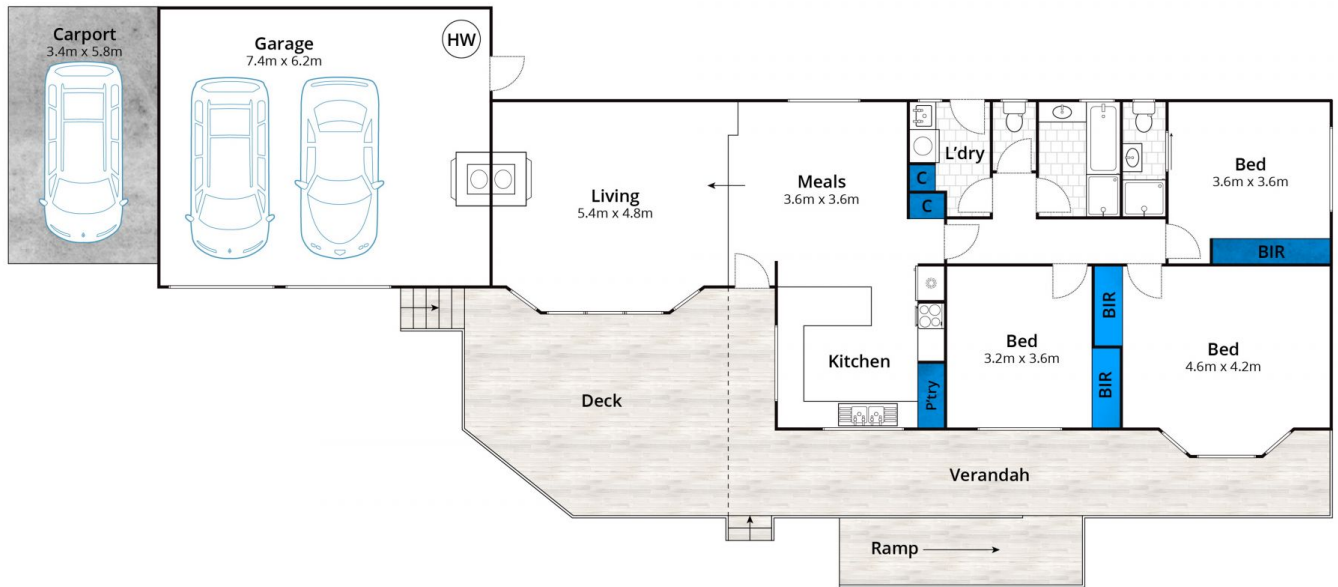


**Mim Atkinson**  
**0352200000**

[For full version visit the website](https://www.greatoceanproperties.com.au)

<https://www.greatoceanproperties.com.au>

5220 0000



Approx. Area 170m<sup>2</sup>

Whilst [bwrm.com.au](http://bwrm.com.au) has made every attempt to ensure the accuracy of the floor plan contained here, measurements are approximate and no responsibility is taken for any error, omission, or mis-statement. This plan is for illustrative purposes only.

## 14 Murray Street, Anglesea





