



## 9 Lialeeta Road FAIRHAVEN VIC

5 🏠 3 🚗 4 🚗

With a total land area of 2640sqm (app) this substantial and elevated property offers stunning views towards Aireys Inlet, taking in the ocean, river and the iconic Split Point Lighthouse. The fully renovated 4BR residence and the separate 1BR cottage, present beautifully and are ready to use this summer. The residence enjoys a great sense of space with 3 living areas and significant sun decking. Lying in the main bedroom watching the ocean with French doors wide open, is what you imagine a true coastal escape should provide. When you include the cottage, there is ample accommodation to cater for the extended family - or AirBNB rental options if the cottage is not required for family use. The elevated position provides a privileged sense of space that is enhanced by the very large, fully landscaped allotment surrounding the dwellings as well as

**Type** : House  
**Price** : \$ 3,150,000  
**Land Size** : 2640 sqm  
**View** : <https://www.greatoceanproperties.com.au/7237673>



**Marty Maher**  
0352200000

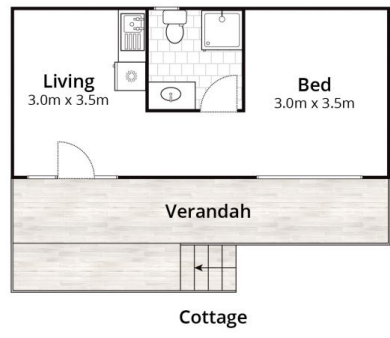
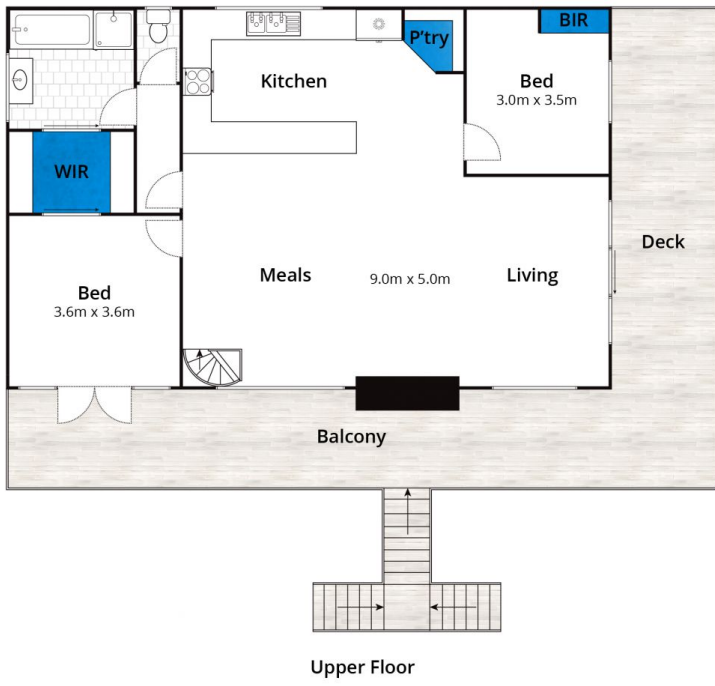


**Mim Atkinson**  
0352200000

[For full version visit the website](https://www.greatoceanproperties.com.au)

<https://www.greatoceanproperties.com.au>

5220 0000



Whilst [bwrn.com.au](http://bwrn.com.au) has made every attempt to ensure the accuracy of the floor plan contained here, measurements are approximate and no responsibility is taken for any error, omission, or mis-statement. This plan is for illustrative purposes only.

## 9 Lialeeta Road, Fairhaven

