



11 Sixth Avenue ANGLESEA VIC

4 2 2

The precinct on the ocean side of the Great Ocean Road in Point Roadknight has been one of the most sought after areas on the Surfcoast for many years now. The ability for family members to access the beautiful Point Roadknight beach without having to cross the GOR has always been appealing. Within this precinct there are some properties that really epitomise what living a true beach lifestyle means and this property is definitely one of them. Every window you look out of on the upper level has this beautiful green leafy view with glimpses of ocean through those facing that way. It is incredibly peaceful and the 697 sqm (app) allotment itself is gorgeous. The 4BR residence makes the most of its setting with large living areas on both levels and extensive sun decking. It has a traditional Point Roadknight beach house theme to it however has in recent

Type : House
Land Size : 697 sqm
View : <https://www.greatoceanproperties.com.au/7264191>



Marty Maher
0352200000

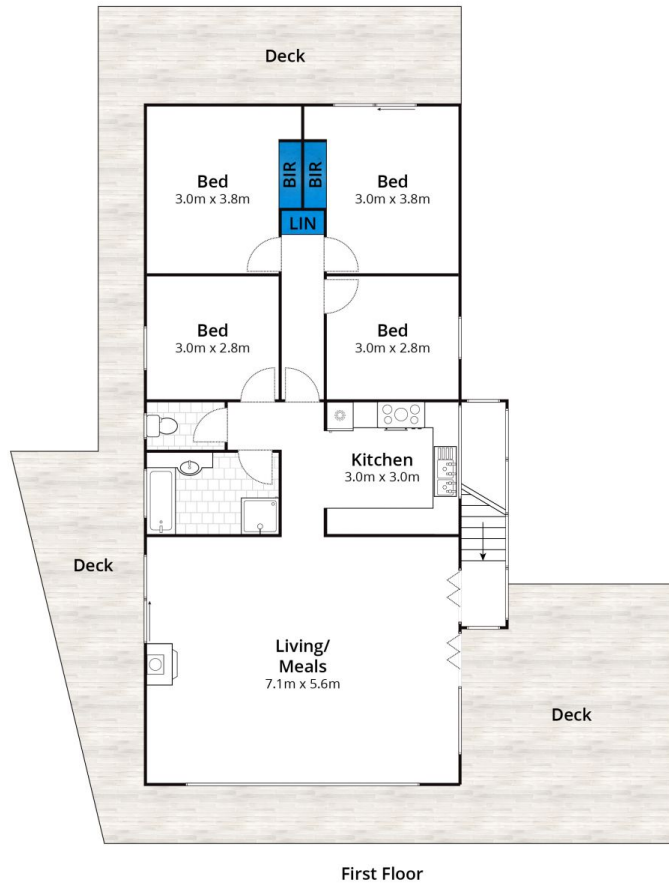
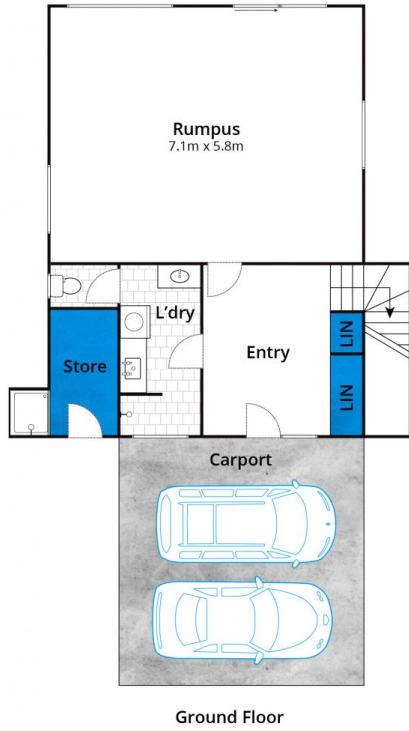


Mim Atkinson
0352200000

[For full version visit the website](https://www.greatoceanproperties.com.au)

<https://www.greatoceanproperties.com.au>

5220 0000



Whilst bwrn.com.au has made every attempt to ensure the accuracy of the floor plan contained here, measurements are approximate and no responsibility is taken for any error, omission, or mis-statement. This plan is for illustrative purposes only.

11 Sixth Avenue, Anglesea

