



47 Seaview Drive APOLLO BAY VIC

4 2 3

This substantial four-bedroom home is all class and sophistication. Set on a 580sqm block with a large council reserve on the north side, the views from this gorgeous property cannot be built out.

A portico covers your entrance into the home with a double height atrium and stylish light fittings. The contemporary steel single stringer stairs with magnificent solid treads recycled from the railway timber from the Anglesea line, lead to the upper level. The upstairs with high ceilings opens to the living area which is very light and warm on a cool day, with large windows with block out blinds facing north.

The gourmet kitchen has Caesarstone benches, ample cupboard space, a walk-in pantry, Bosch dishwasher, large

Type : House
Building Size : 580 sqm
View : <https://www.greatoceanproperties.com.au/7304325>



Gary Van Someren
 0418550049



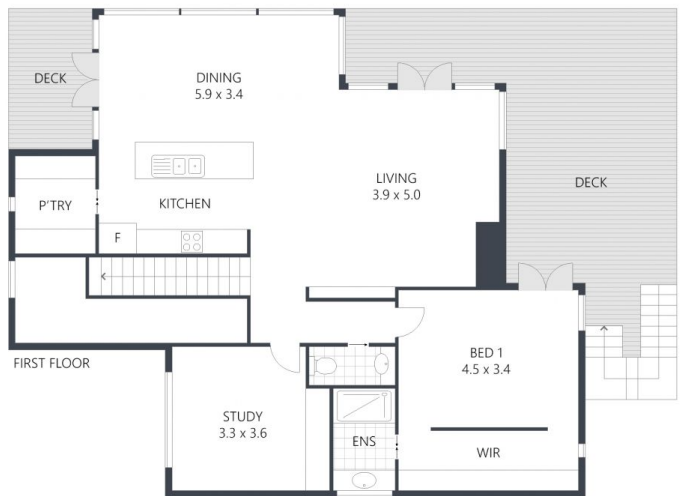
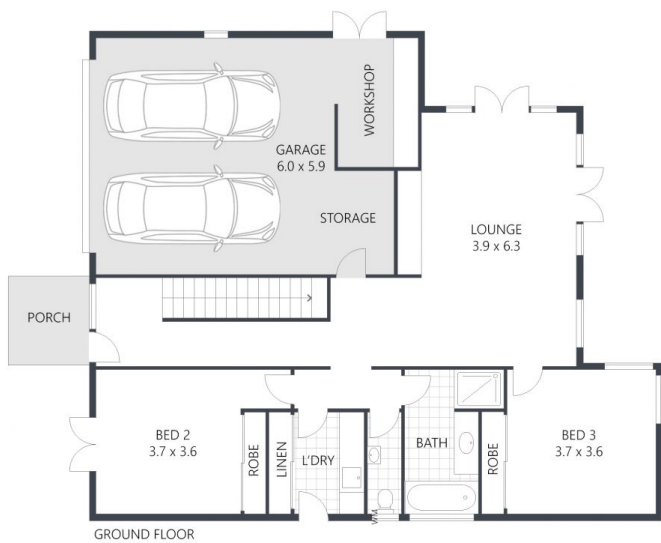
James Aiken
 0402339182

[For full version visit the website](https://www.greatoceanproperties.com.au)

<https://www.greatoceanproperties.com.au>

03 52377 366

47 Seaview Drive, **APOLLO BAY**



greatoceanproperties

INTERNAL: **269m²** EXTERNAL: **52m²** TOTAL: **321m²**

ARTIST'S IMPRESSION ONLY: While every attempt has been made to ensure the accuracy of this floor plan's areas and measurements of doors, windows, rooms and all other items are approximate and no responsibility is taken for any error, omission, or mis-statement. This plan is for illustrative purposes only and should only be used as such by any prospective purchaser.
Floor plan by: www.realestatefloorplans.com.au

