



35 Beach Road AIREYS INLET VIC

3 1 2

This pocket of Aireys Inlet has always been very popular for several reasons. The beautiful ocean and river valley views are a major drawcard from this elevated position however the fact that you can walk to get a coffee or have a meal nearby is also a significant feature of this location. The street level entry, single storey dwelling is the perfect residence to enjoy right now while planning for the future. Street level entry is a sought after feature and is not common on the coast in combination with such a significant outlook that is guaranteed and uninterrupted. The 3 bedroom residence is a much loved, classic 1980s beach house set on a substantial 1216 sqm (app) allotment. The property attracts a significant AirBNB annual return due to both position and the view and this could benefit any future owner.

Type : House
Land Size : 1216 sqm
View : <https://www.greatoceanproperties.com.au/7366352>

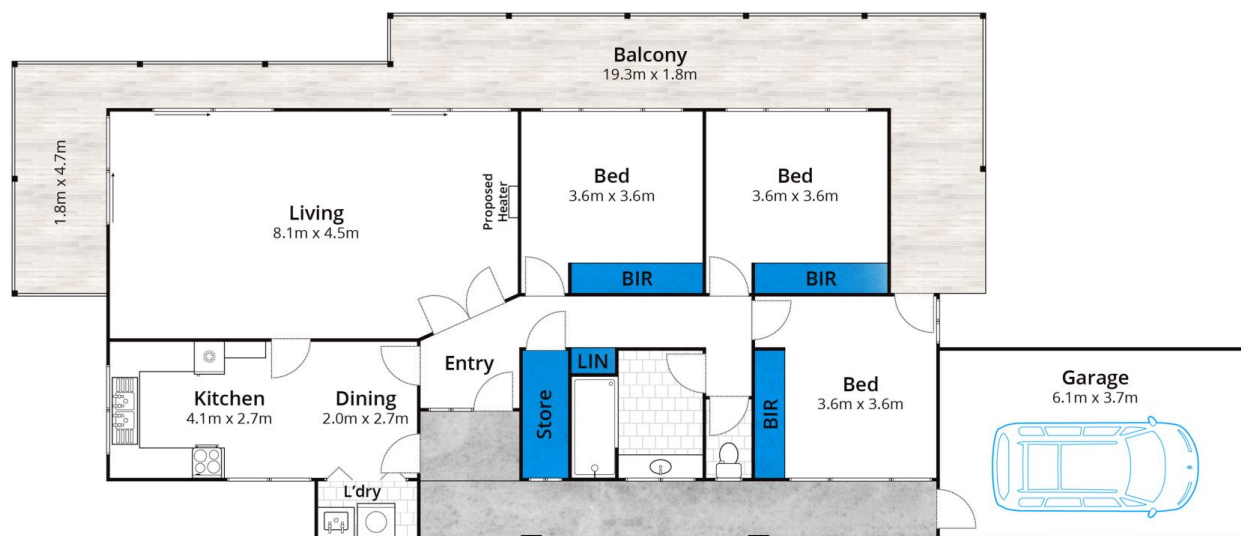


Mim Atkinson
0352200000



Marty Maher
0352200000

[For full version visit the website](https://www.greatoceanproperties.com.au)



Approx House Area 140m²

Whilst bwrm.com.au has made every attempt to ensure the accuracy of the floor plan contained here, measurements are approximate and no responsibility is taken for any error, omission, or mis-statement. This plan is for illustrative purposes only.

35 Beach Road, Aireys Inlet

