



50B Bambra Road AIREYS INLET VIC

4 🏠 2 🚿 2 🚗

It is difficult to do justice to the simple beauty of this property when describing it. This is the chance for anyone who has ever aspired to a Tuscan inspired lifestyle to let their dream come true. The residence appears simple in its design however the thought put into the proportions of the layout, the levels and of course the garden is masterful. The large open plan living area captures light from all directions and at different times of the day. It is a space that you can easily visualise spending many days at peace surrounded by family and friends, exactly what the Tuscans are famous for. There is ample accommodation in 4 bedrooms serviced by 2 bathrooms and a second living area upstairs that would also make an excellent light filled home office if needed. Set in a private position off Bambra Road on a 620sqm (app) allotment, the location is a flat

Type : House
Land Size : 620 sqm
View : <https://www.greatoceanproperties.com.au/497207>



Marty Maher
0352200000

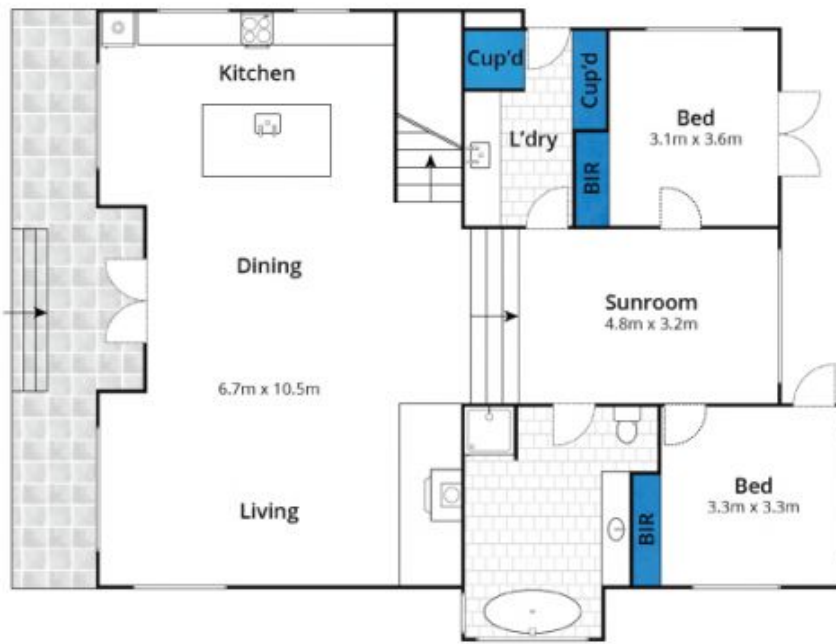


Mim Atkinson
0352200000

[For full version visit the website](https://www.greatoceanproperties.com.au)

<https://www.greatoceanproperties.com.au>

5220 0000



Ground Floor



First Floor

Approx House Area 201m²
Approx Land Area 619m²

Whilst lwwm.com.au has made every attempt to ensure the accuracy of the floor plan contained here, measurements are approximate and no responsibility is taken for any error, omission, or mis-statement. This plan is for illustrative purposes only.

50B Bambra Road, Aireys Inlet

