



59 Boundary Road AIREYS INLET VIC

4 🛏 2 🚿 3 🚗

With a land size of just over an acre (4,154 sqm app) there is plenty of room to enjoy a quality coastal lifestyle on this large native allotment. The substantial 4 bedroom, 2 living area and 2 bathroom residence has been masterfully refurbished and evokes a welcoming, comfortable feel from the moment of entry. The single storey, brick residence enjoys an abundance of natural light due to the positioning on the allotment. The dwelling has a large, open plan living, kitchen and dining area, complete with wood fire and split system air-conditioning, that can be closed off from the second living area and master bedroom, providing privacy and space for when the extended family get together. The kitchen features a Miele dishwasher, brand new cooktop and oven, including a built in air fryer. This property represents an opportunity for a genuine coastal/country

Type : House
Land Size : 4154 sqm
View : <https://www.greatoceanproperties.com.au/512027>

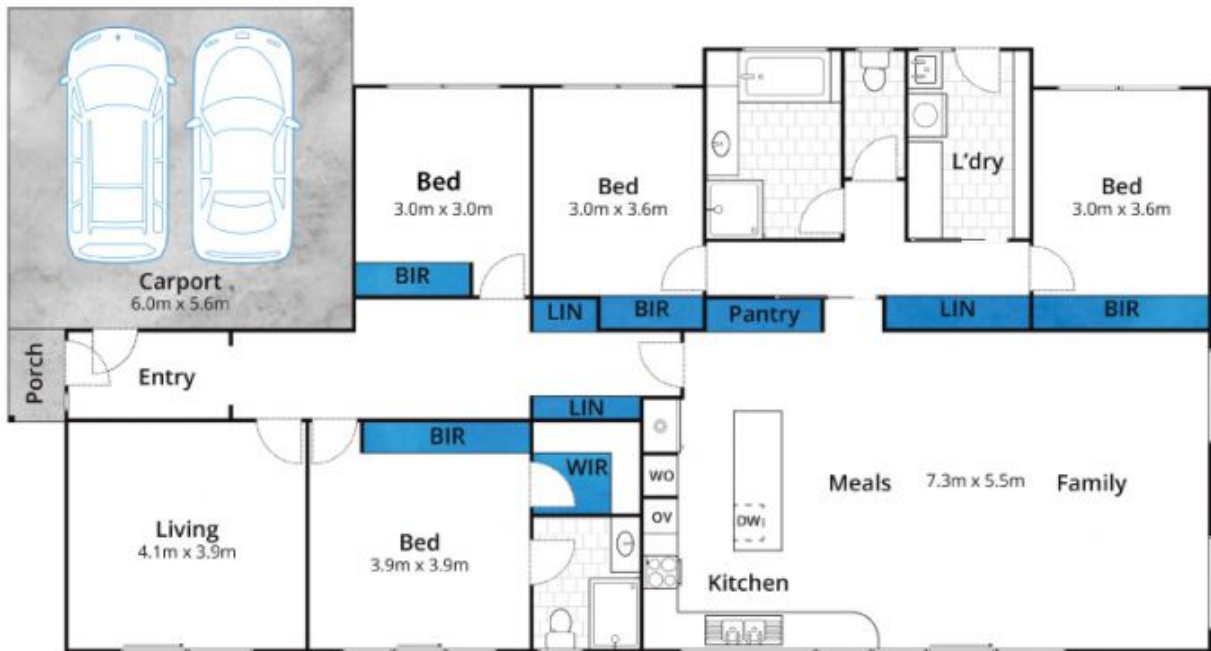


Mim Atkinson
0352200000



Marty Maher
0352200000

[For full version visit the website](https://www.greatoceanproperties.com.au)



Approx House Area 177m²

Whilst bwrm.com.au has made every attempt to ensure the accuracy of the floor plan contained here, measurements are approximate and no responsibility is taken for any error, omission, or mis-statement. This plan is for illustrative purposes only.

59 Boundary Road, Aireys Inlet

